



MANCHESTER MEMORIAL ELEMENTARY SCHOOL

SCHEMATIC DESIGN PHASE
SBC MEETING #23
APRIL 26TH, 2018



MANCHESTER MEMORIAL ELEMENTARY SCHOOL
MANCHESTER-ESSEX REGIONAL SCHOOL DISTRICT, MASSACHUSETTS



JCJ ARCHITECTURE

TODAY'S AGENDA

PROJECT UPDATE
PRECEDENT STUDY
DESIGN UPDATE



PROJECT UPDATE

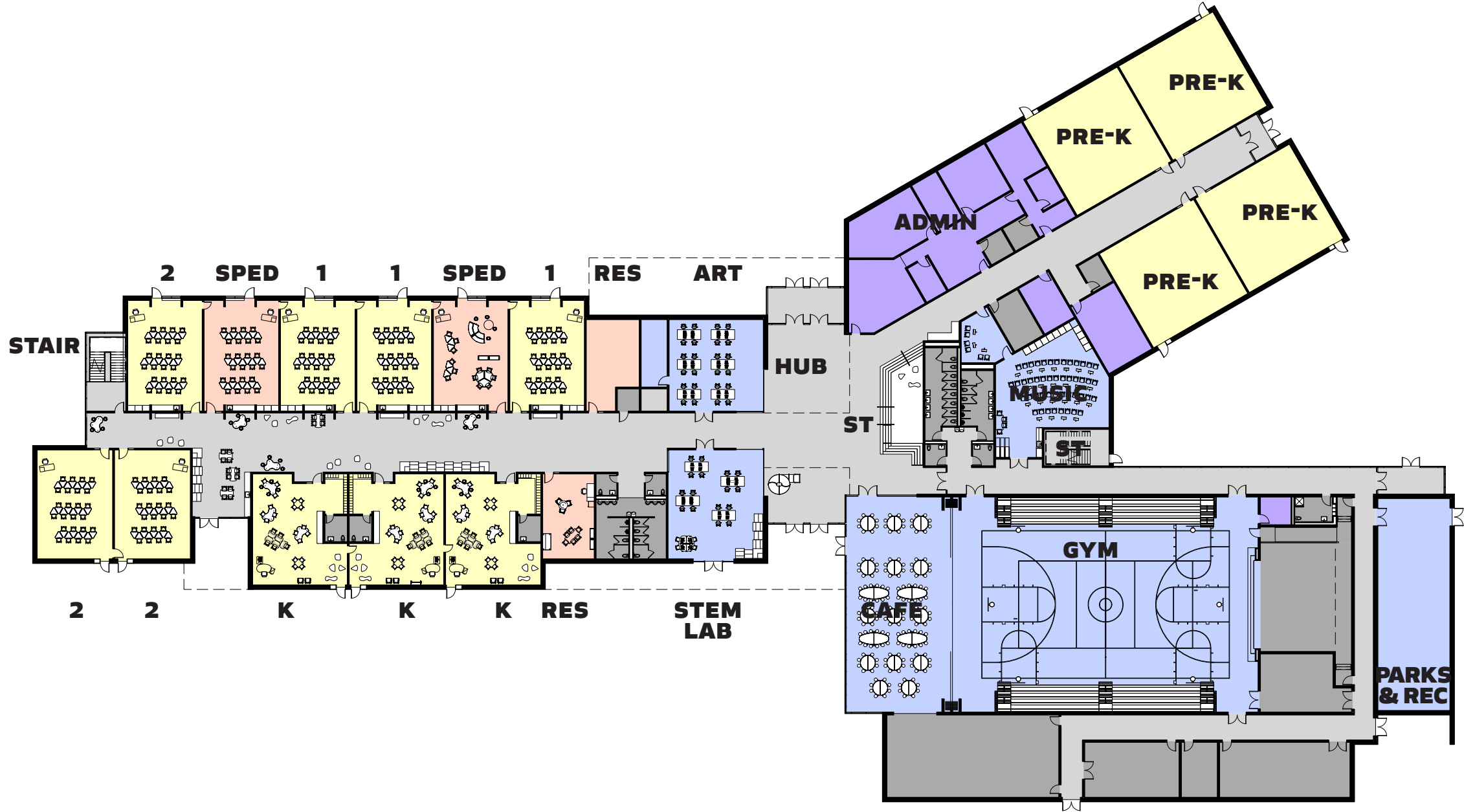
MEETINGS

MET WITH:

- FUTURE PARENTS
- FOOD SERVICES
- TEACHER / STAFF (CONTINUED)
- PARKS & RECREATION
- BICYCLISTS & PEDESTRIANS
- DESIGN SUB-COMMITTEE



FIRST FLOOR PLAN UPDATED



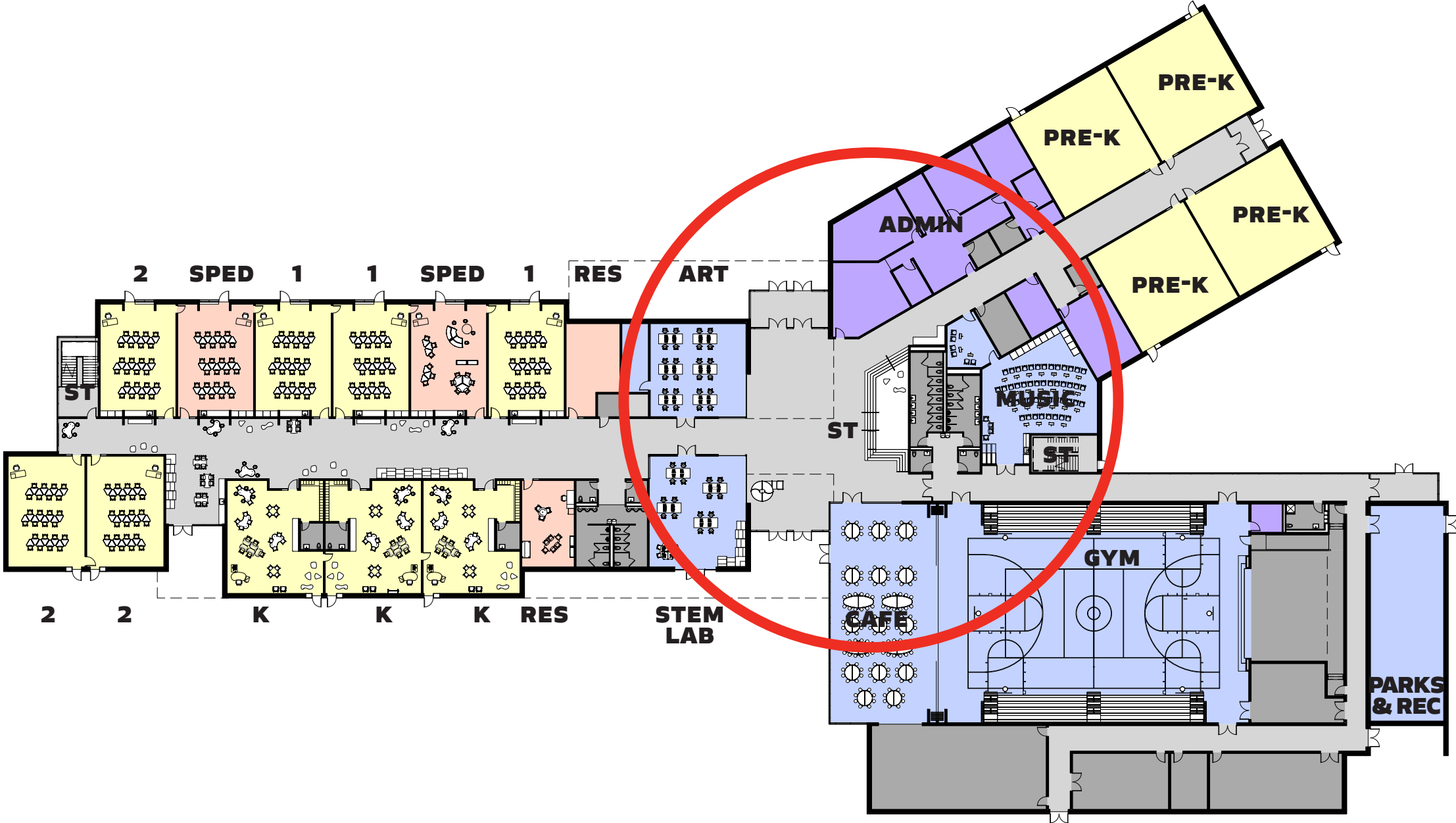
SECOND FLOOR PLAN UPDATED



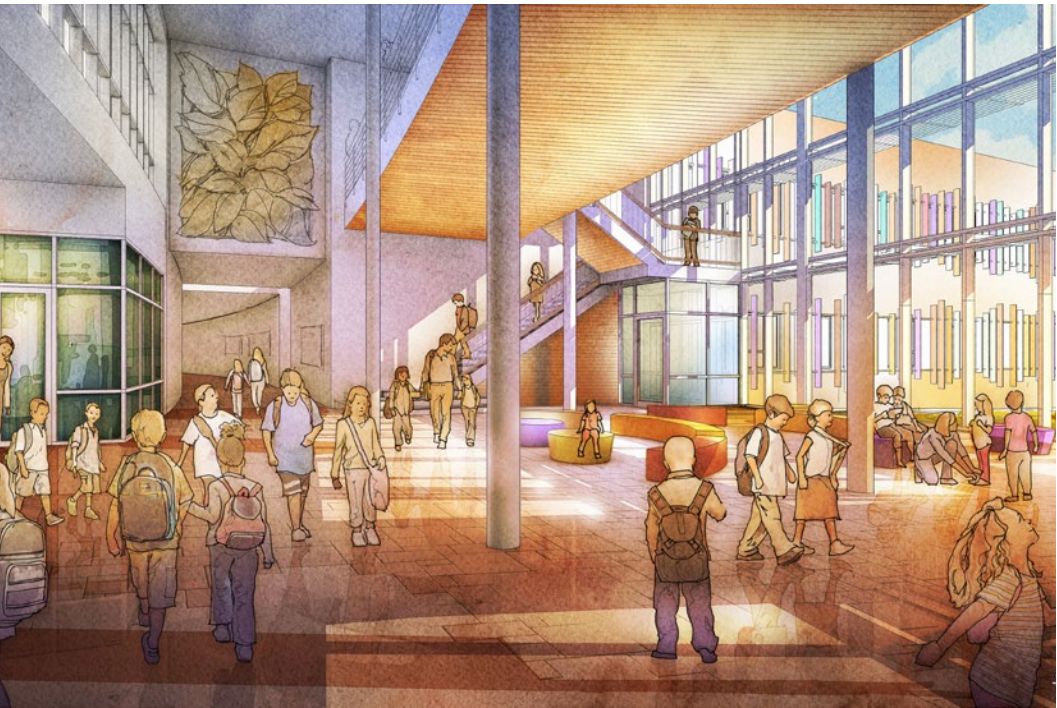
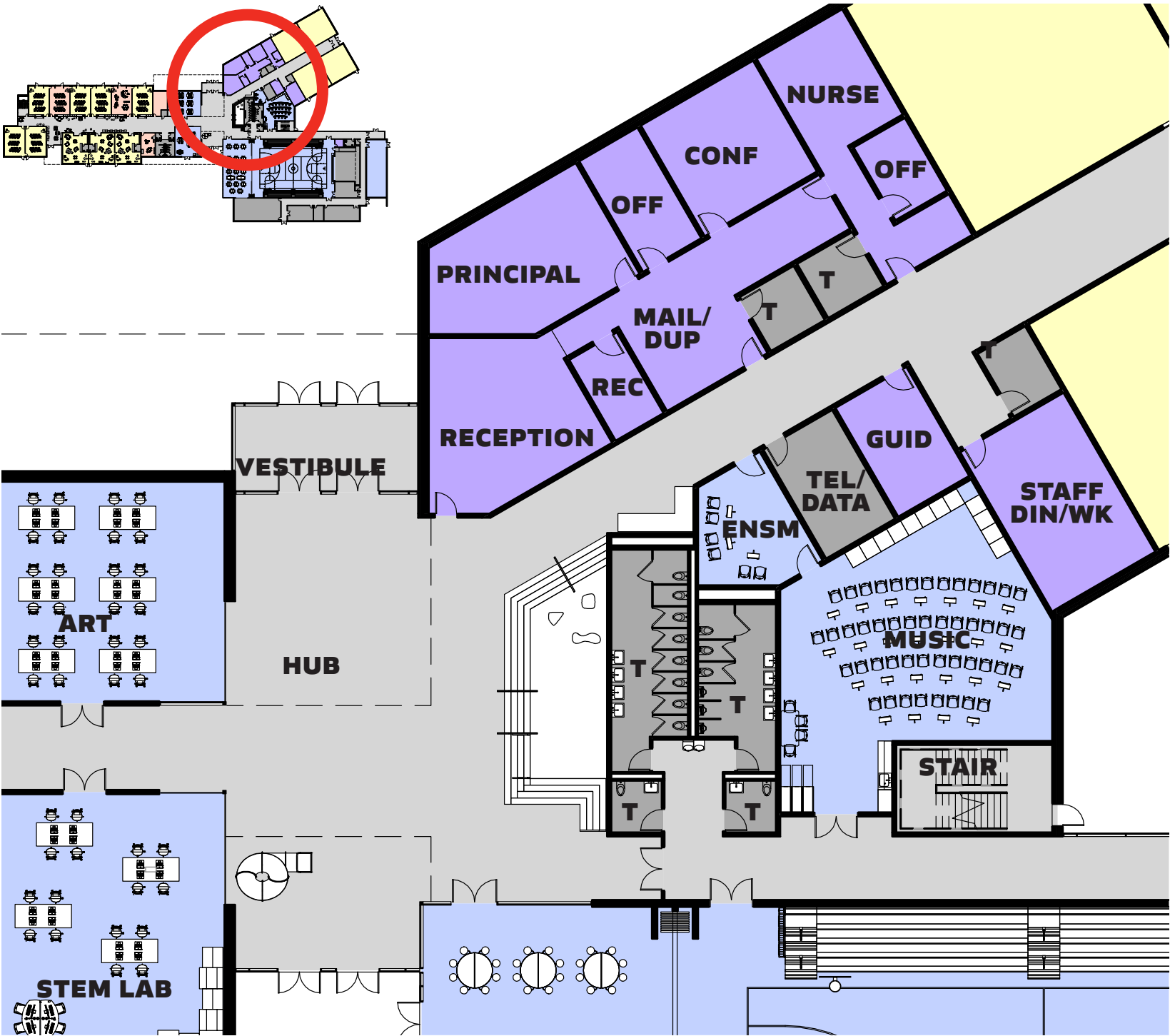
ALTERNATE LOWER LEVEL PLAN



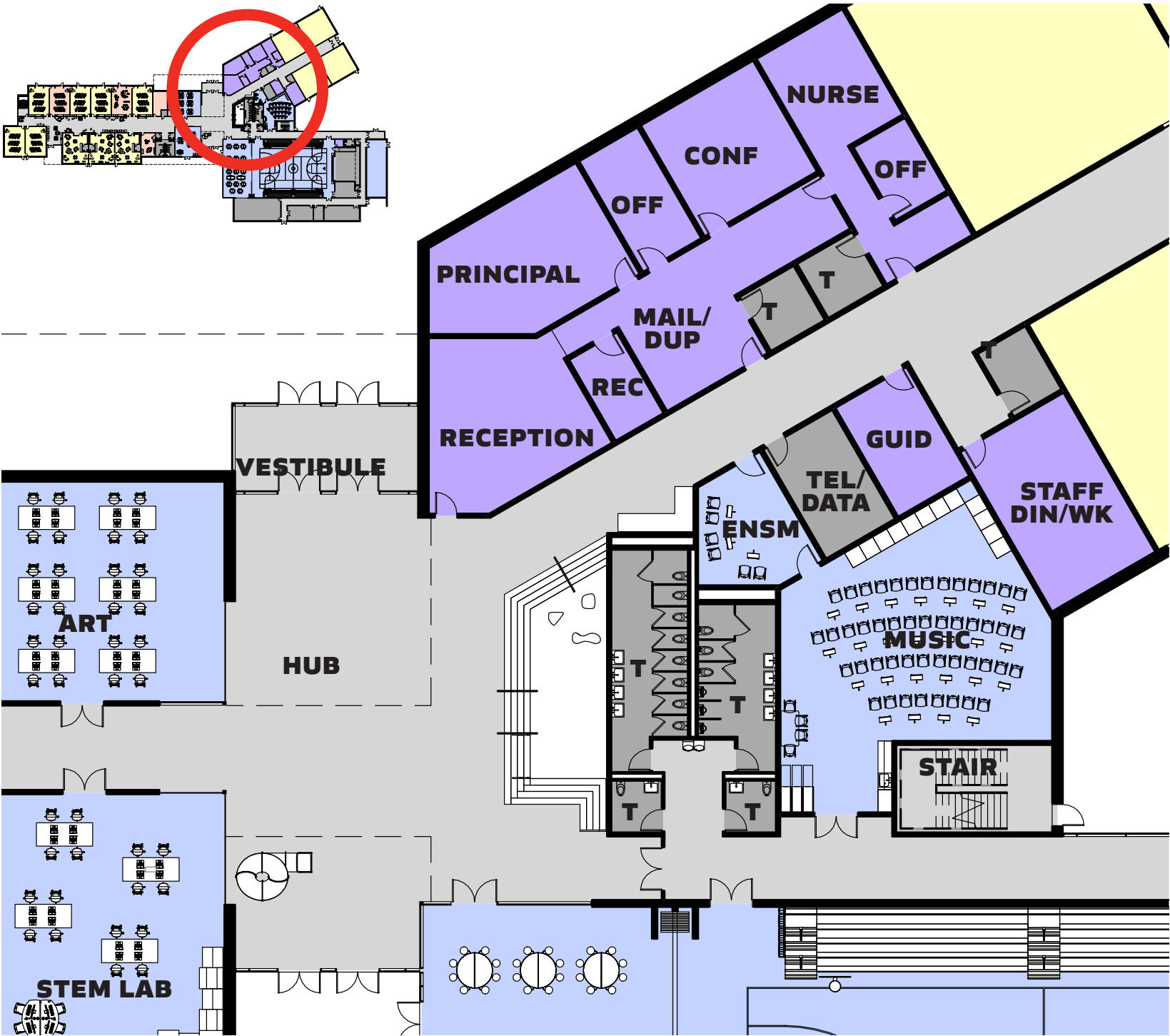
FIRST FLOOR KEY PLAN



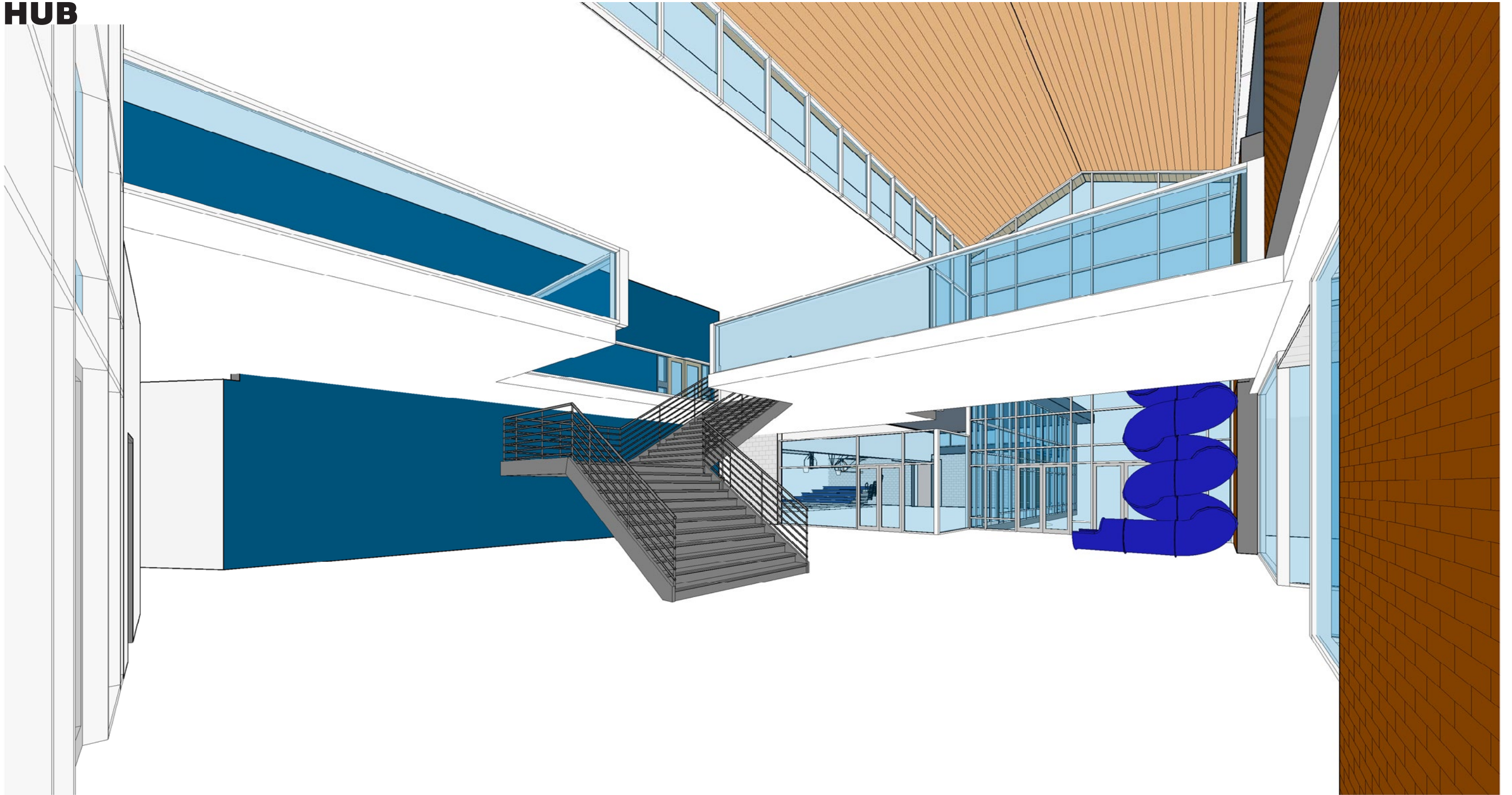
HUB



HUB



HUB

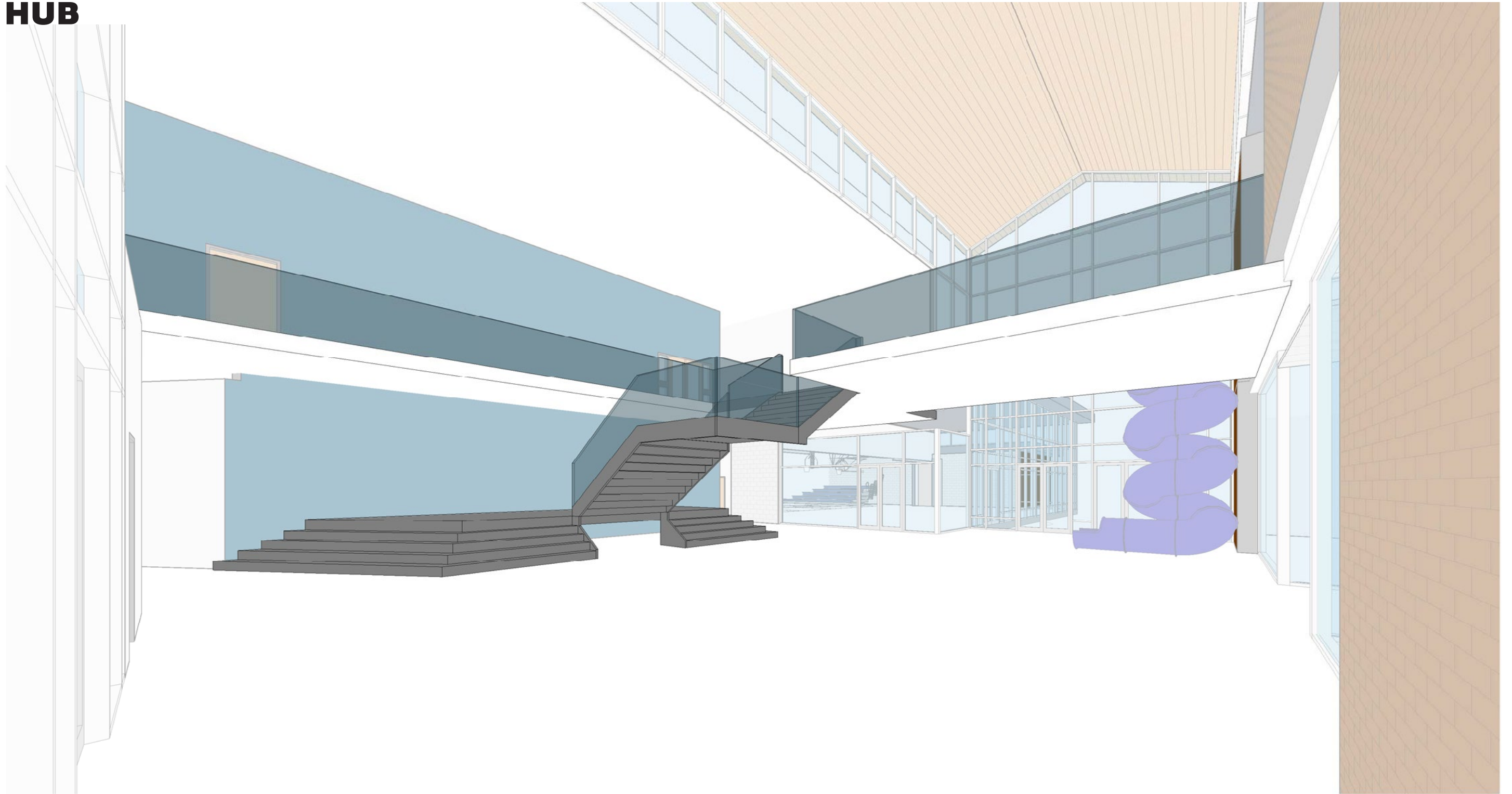


MANCHESTER MEMORIAL ELEMENTARY SCHOOL
MANCHESTER-ESSEX REGIONAL SCHOOL DISTRICT, MASSACHUSETTS



JCJ ARCHITECTURE

HUB

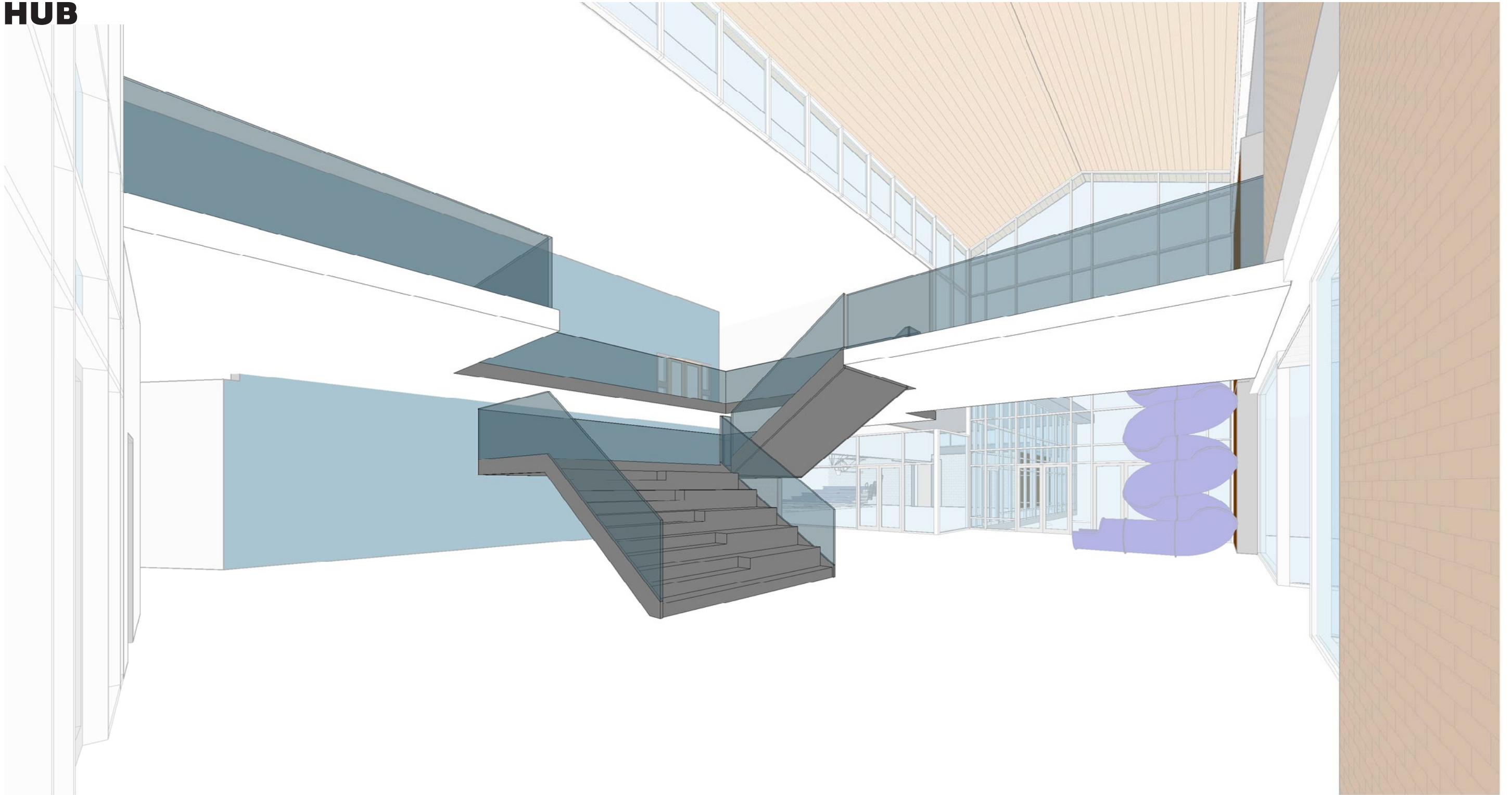


MANCHESTER MEMORIAL ELEMENTARY SCHOOL
MANCHESTER-ESSEX REGIONAL SCHOOL DISTRICT, MASSACHUSETTS



JCJARCHITECTURE

HUB

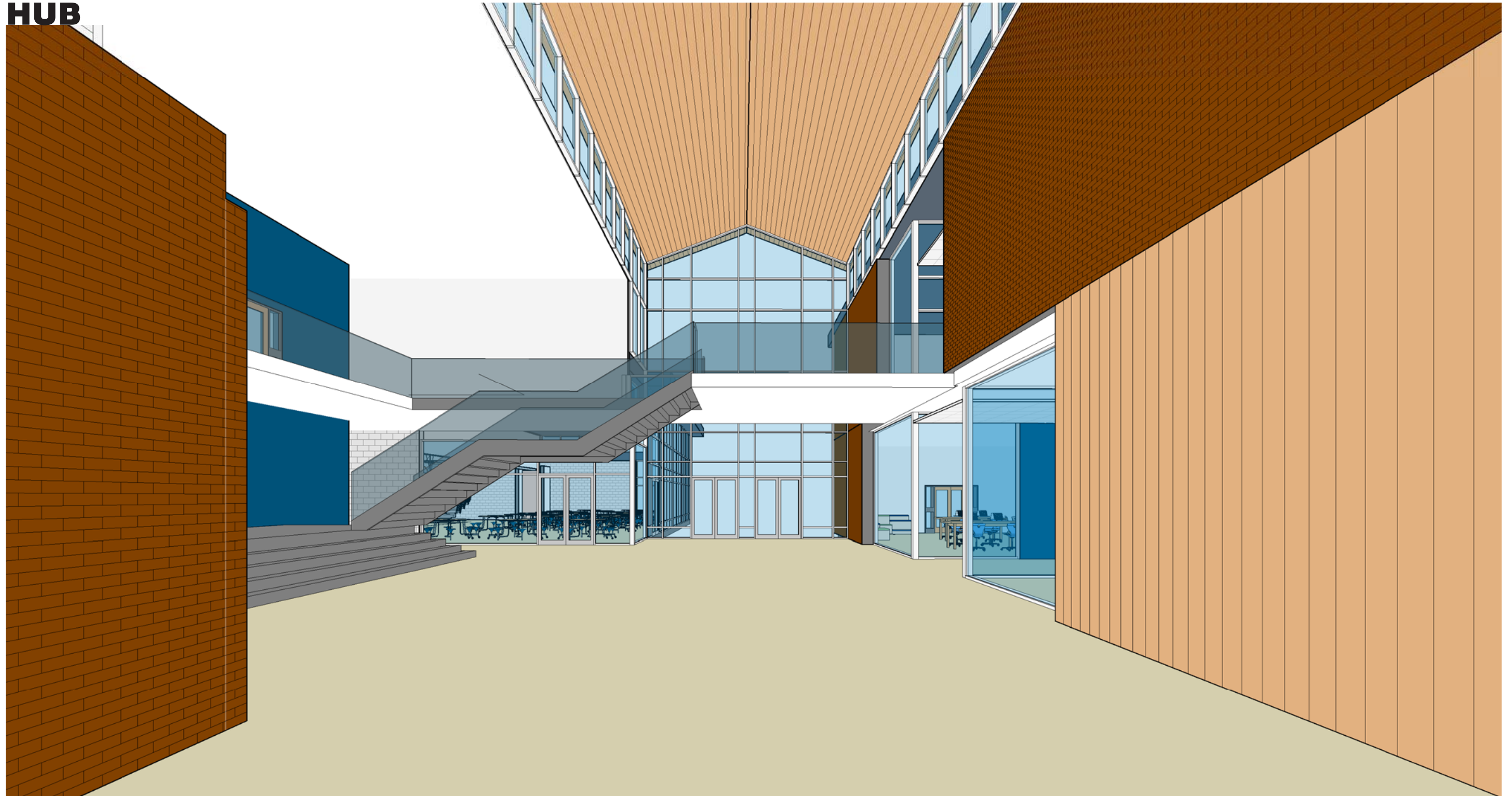


MANCHESTER MEMORIAL ELEMENTARY SCHOOL
MANCHESTER-ESSEX REGIONAL SCHOOL DISTRICT, MASSACHUSETTS



JCJARCHITECTURE

HUB

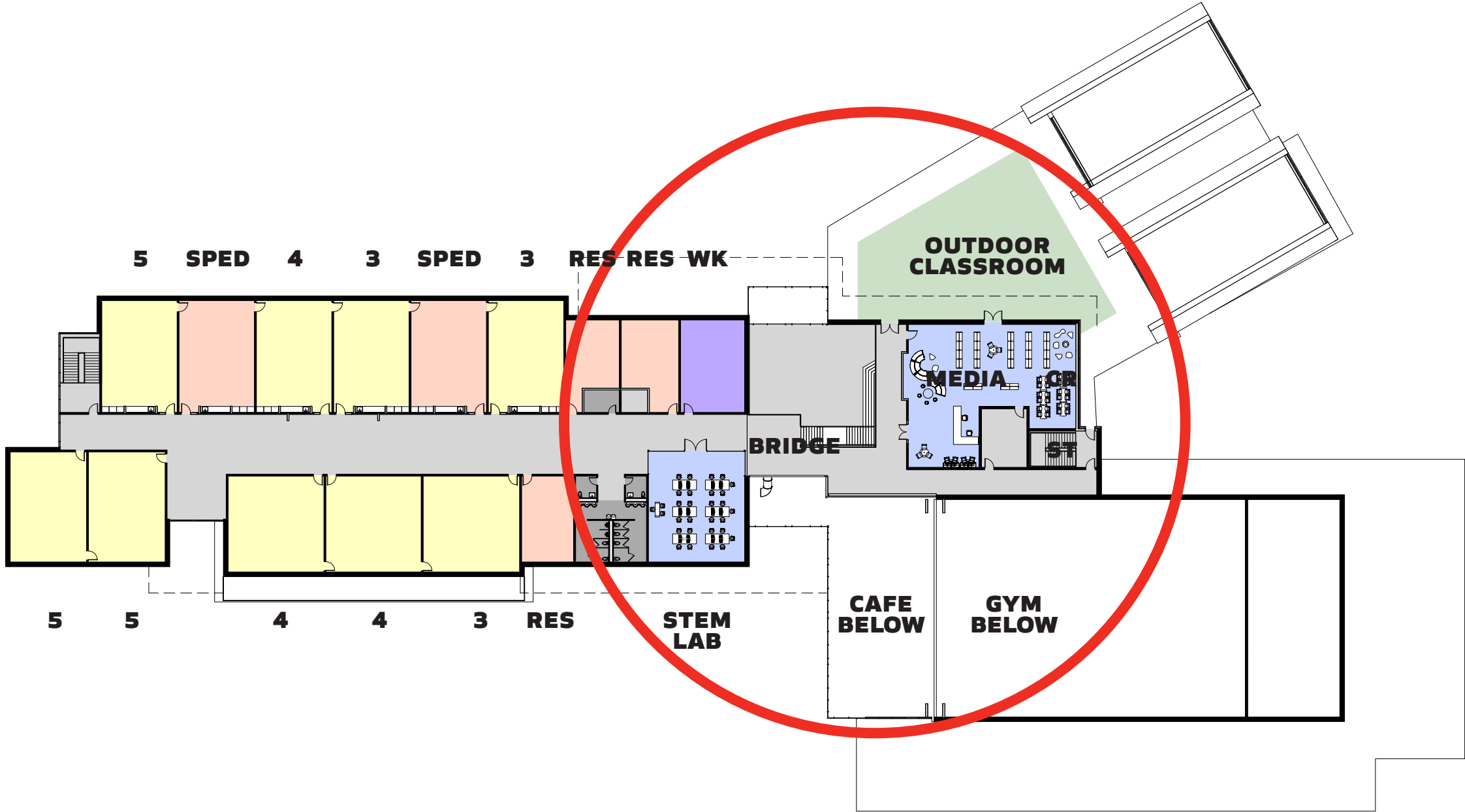


MANCHESTER MEMORIAL ELEMENTARY SCHOOL
MANCHESTER-ESSEX REGIONAL SCHOOL DISTRICT, MASSACHUSETTS

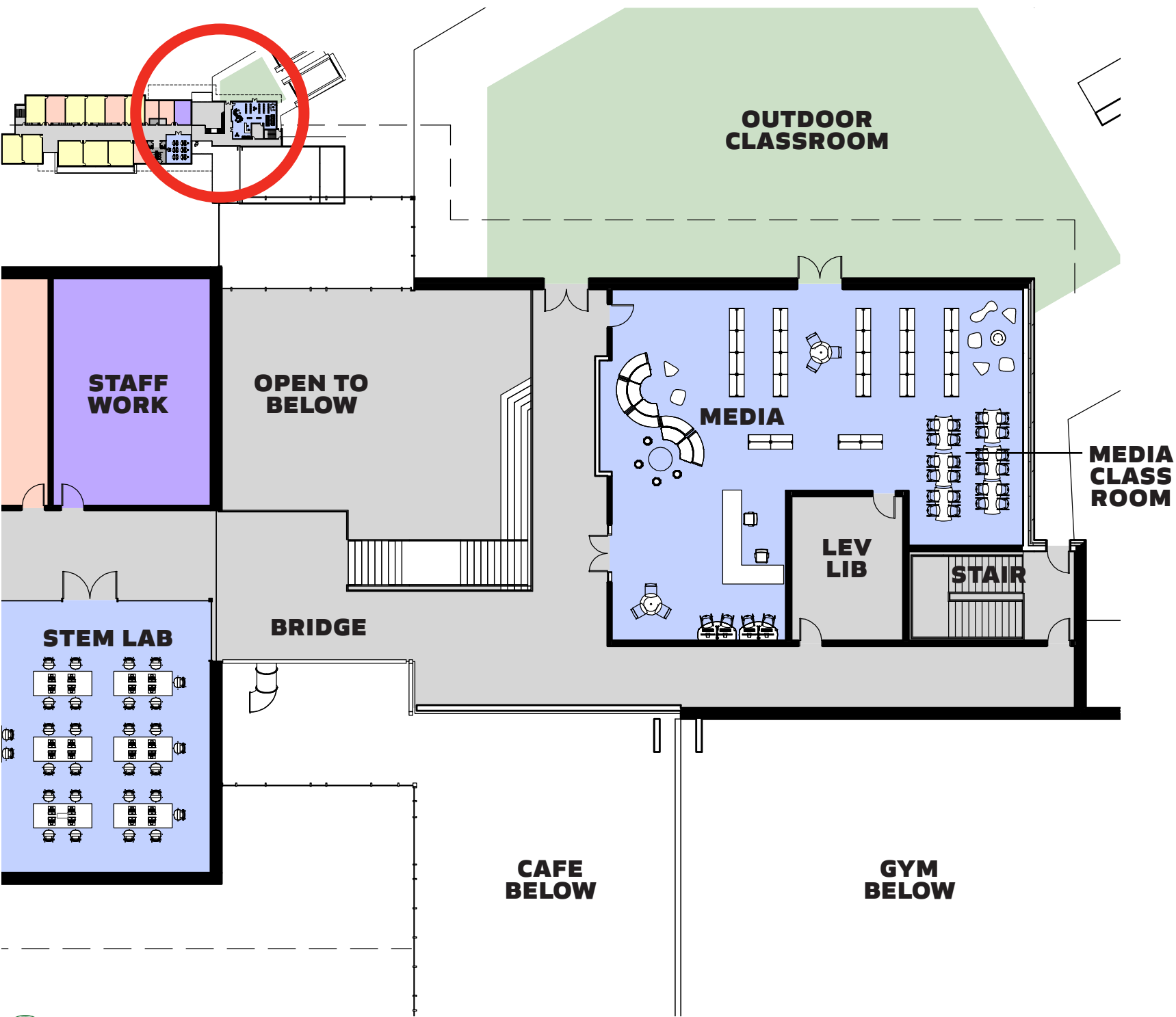


JCJ ARCHITECTURE

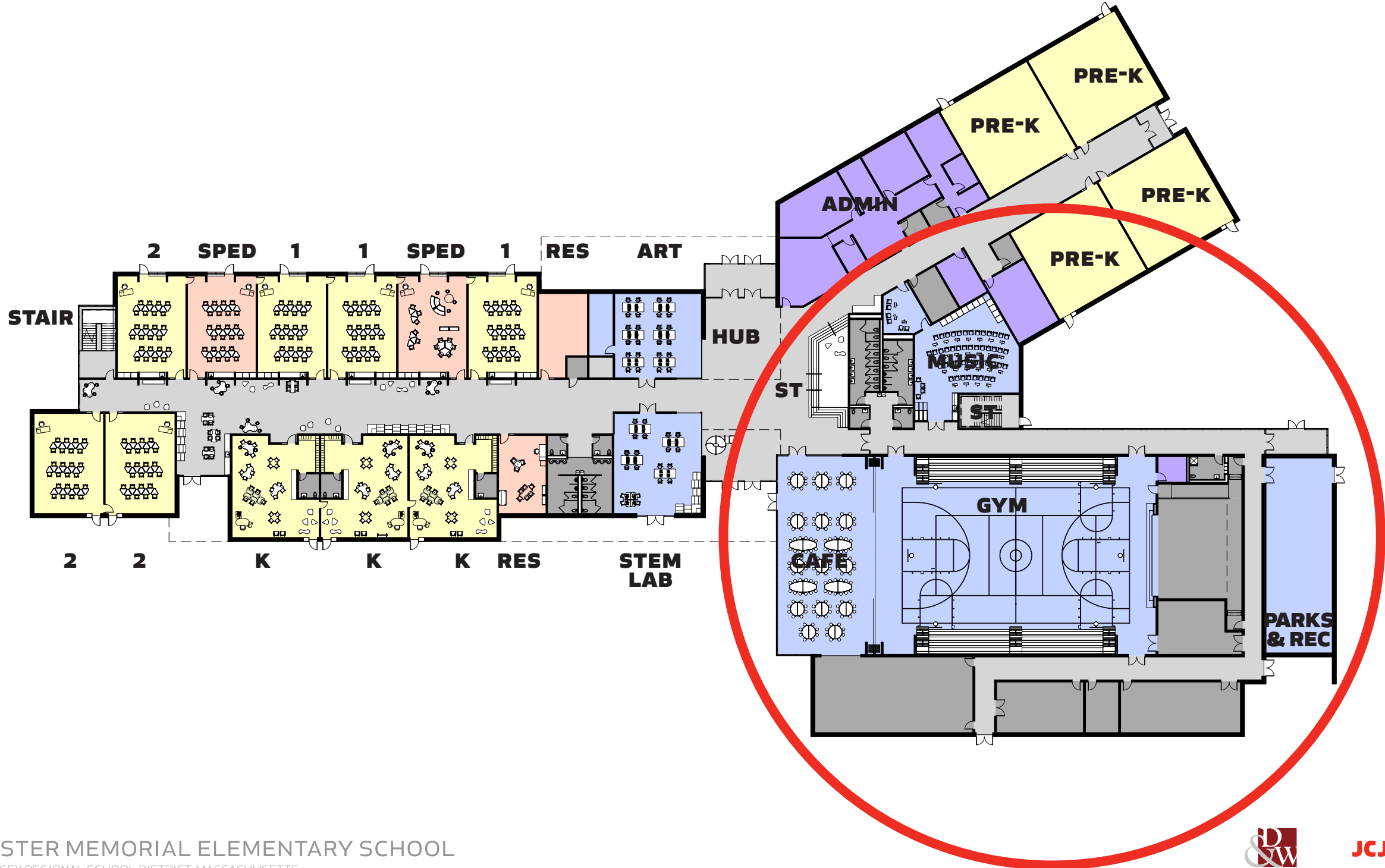
SECOND FLOOR KEY PLAN



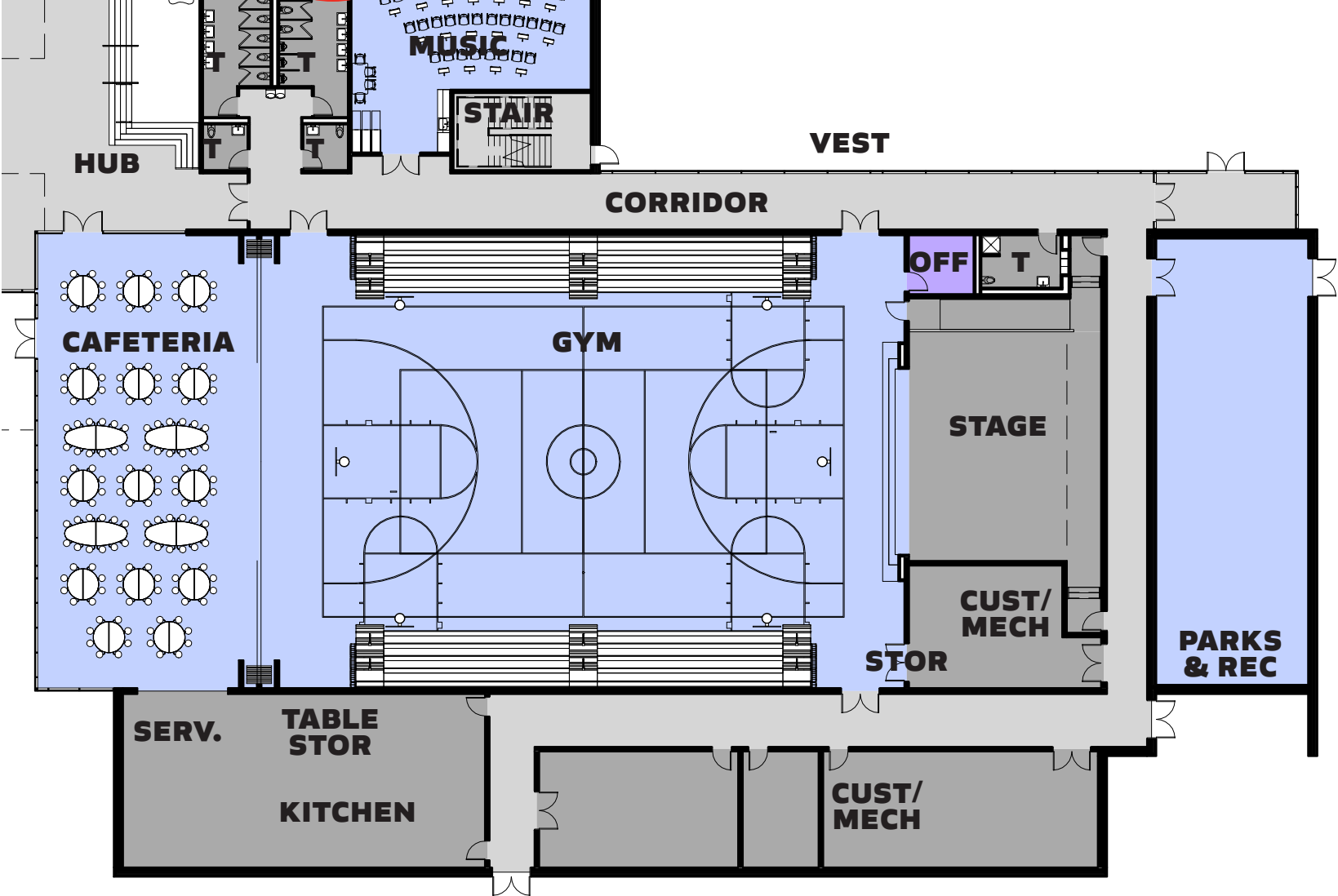
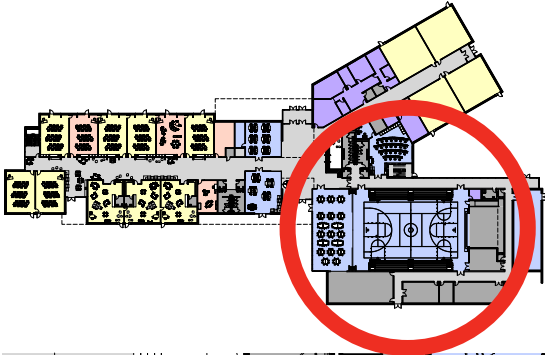
MEDIA CENTER



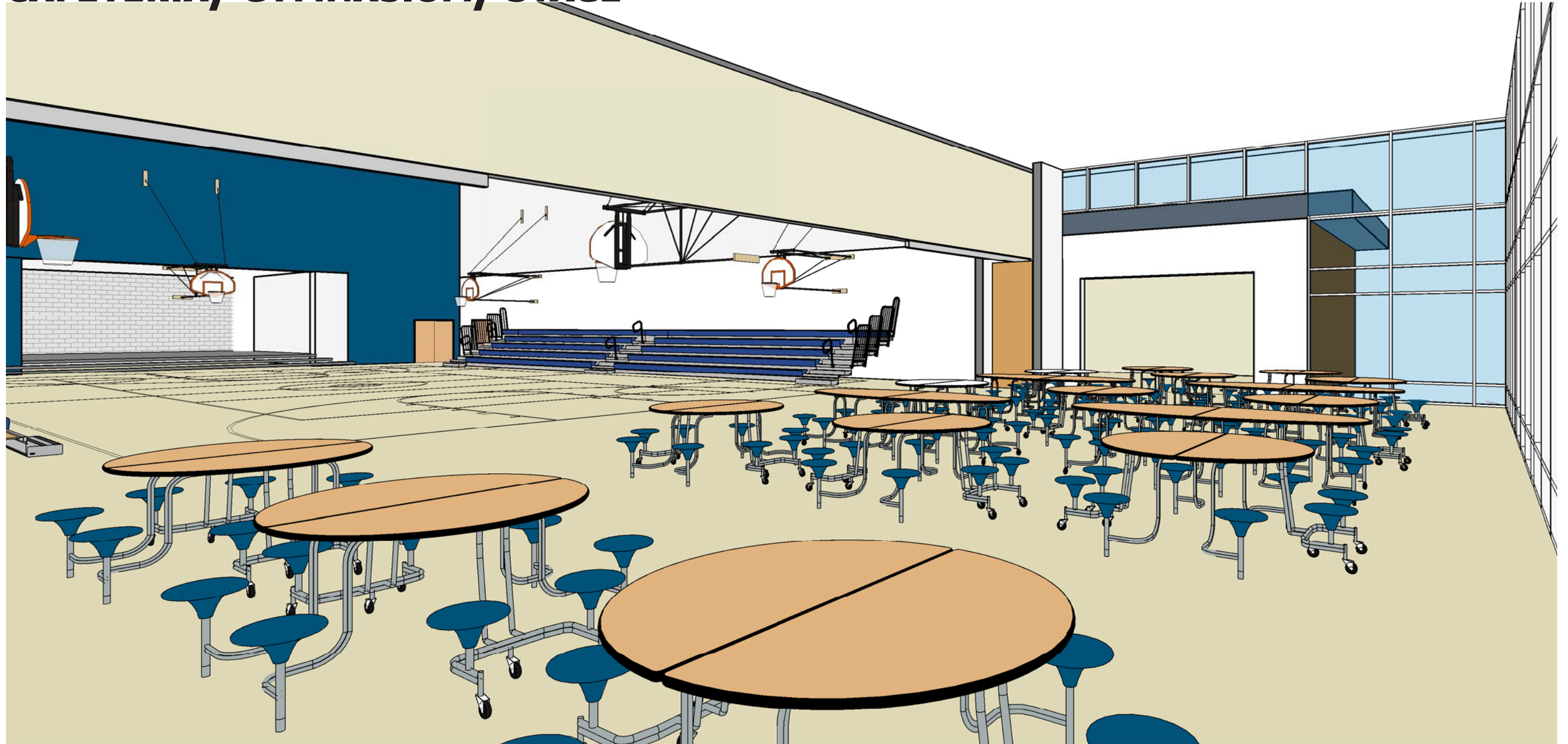
FIRST FLOOR KEY PLAN



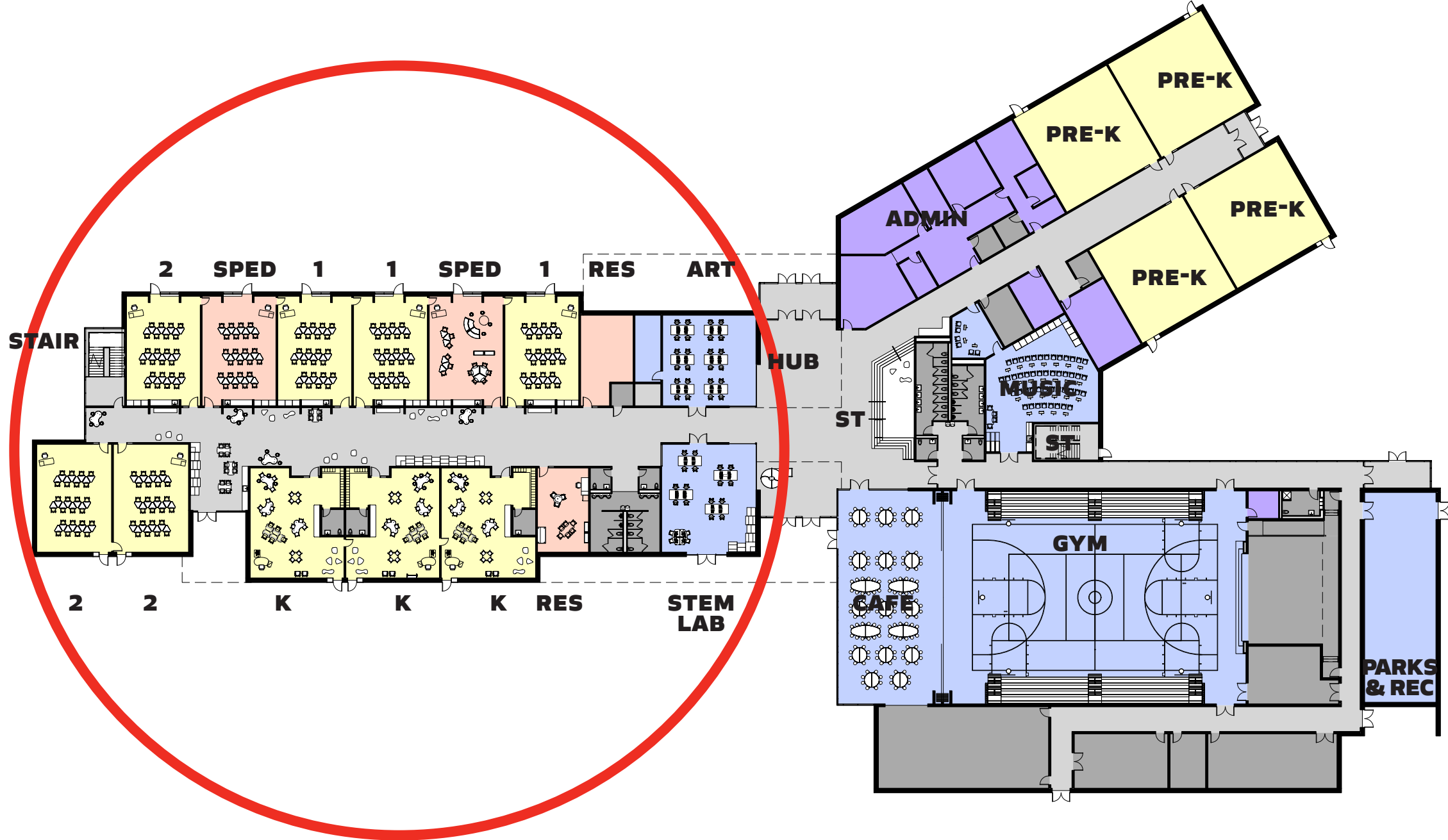
CAFETERIA/ GYMNASIUM/ STAGE



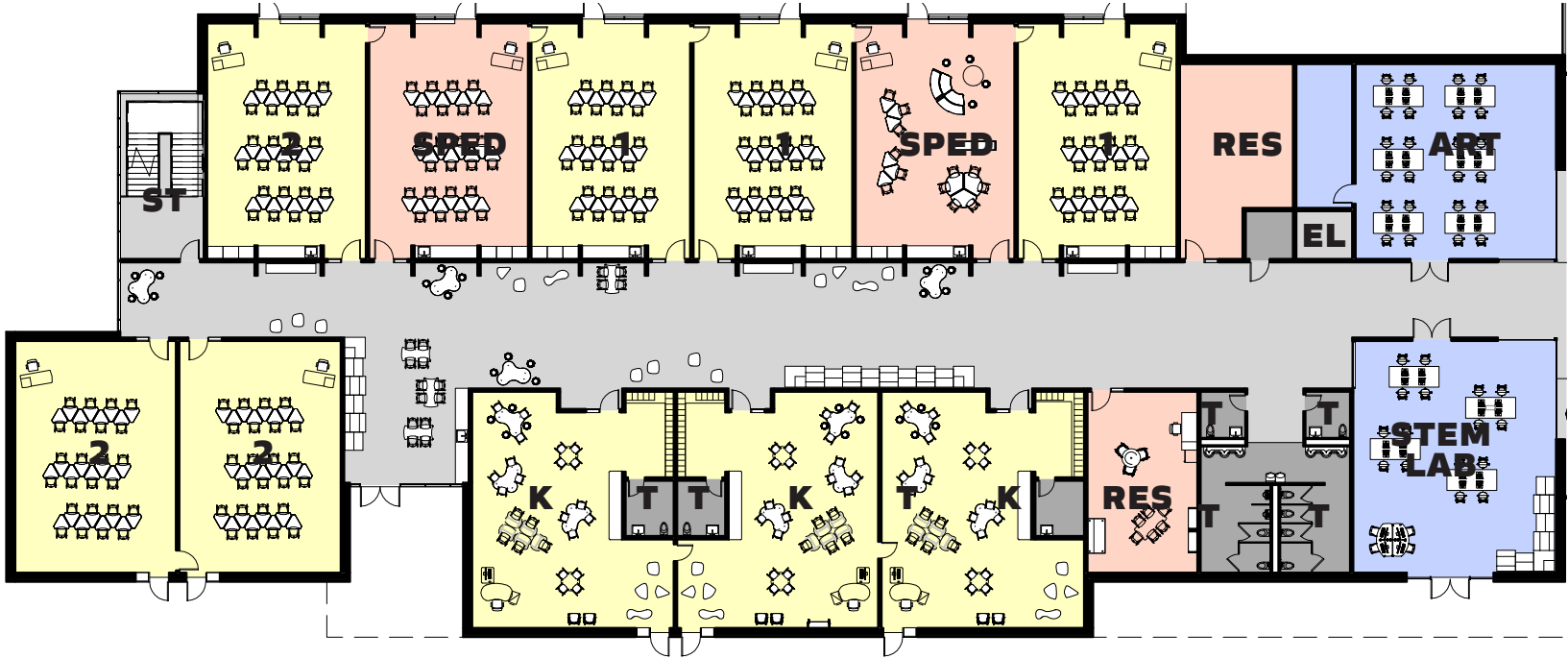
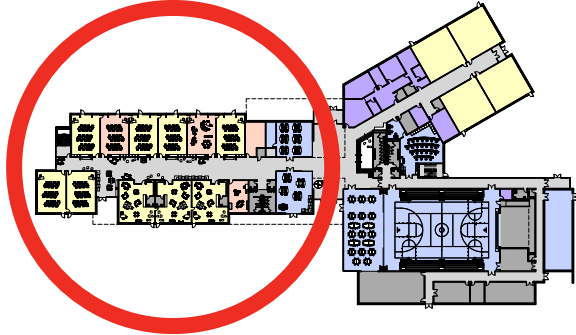
CAFETERIA/ GYMNASIUM/ STAGE



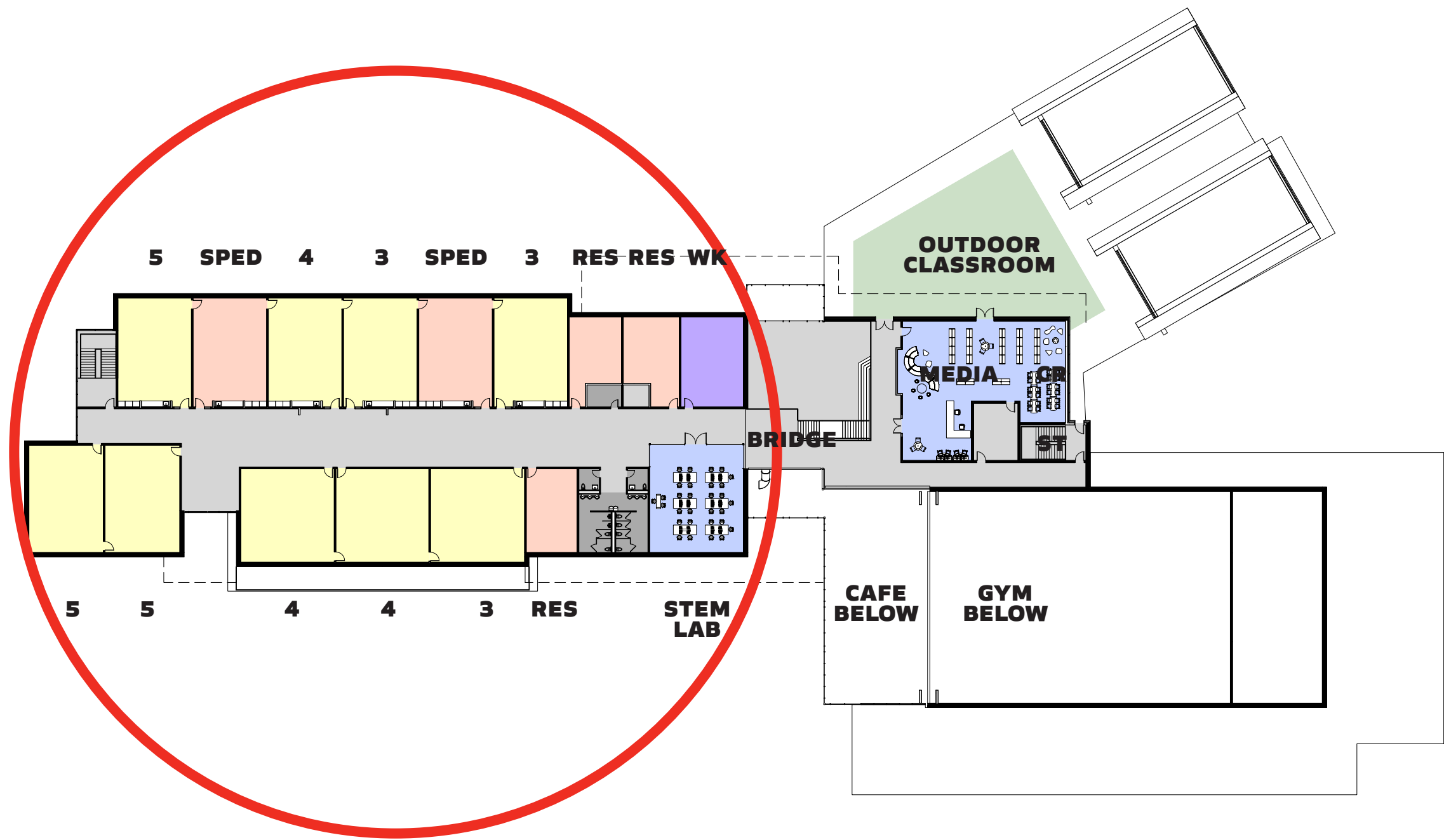
FIRST FLOOR KEY PLAN



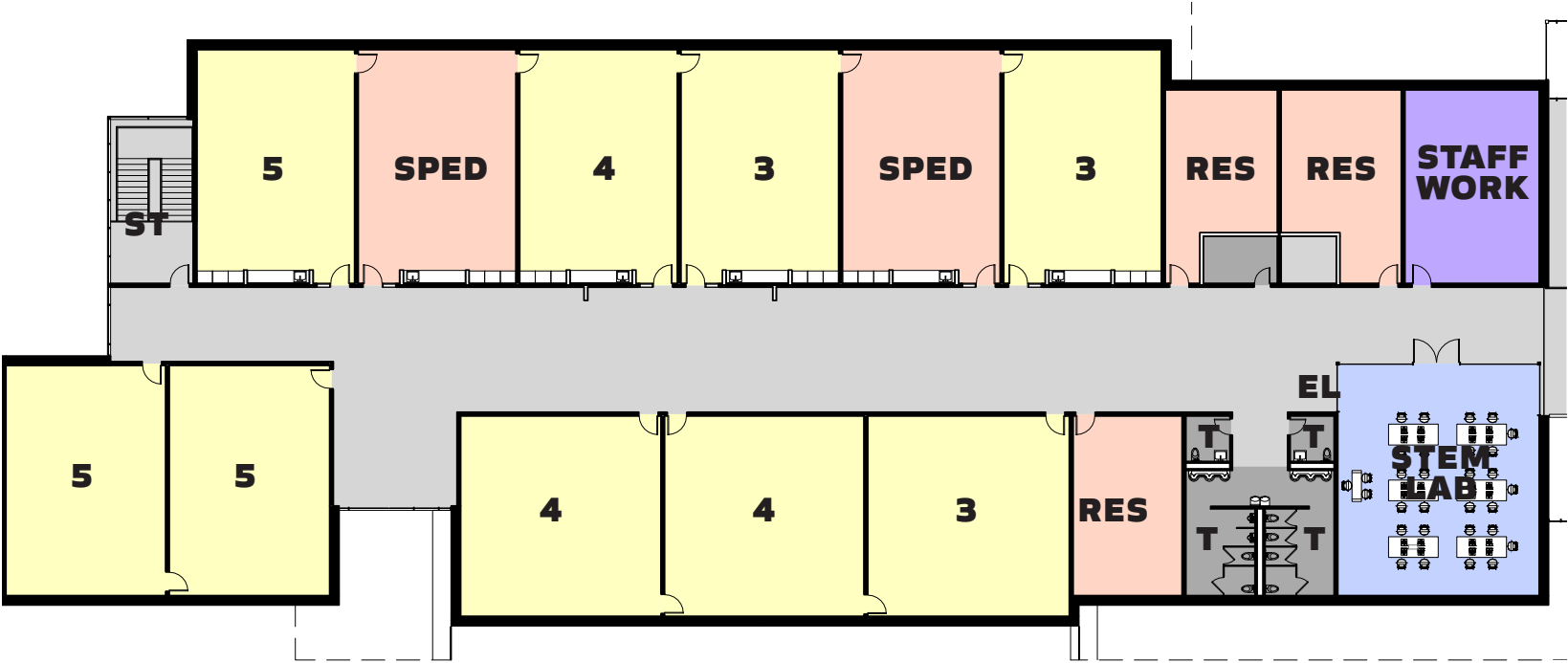
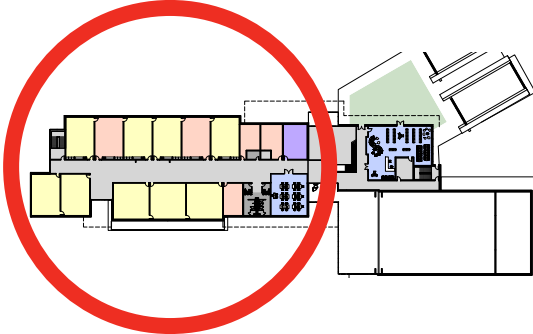
CLASSROOM COMMUNITIES - FIRST FLOOR



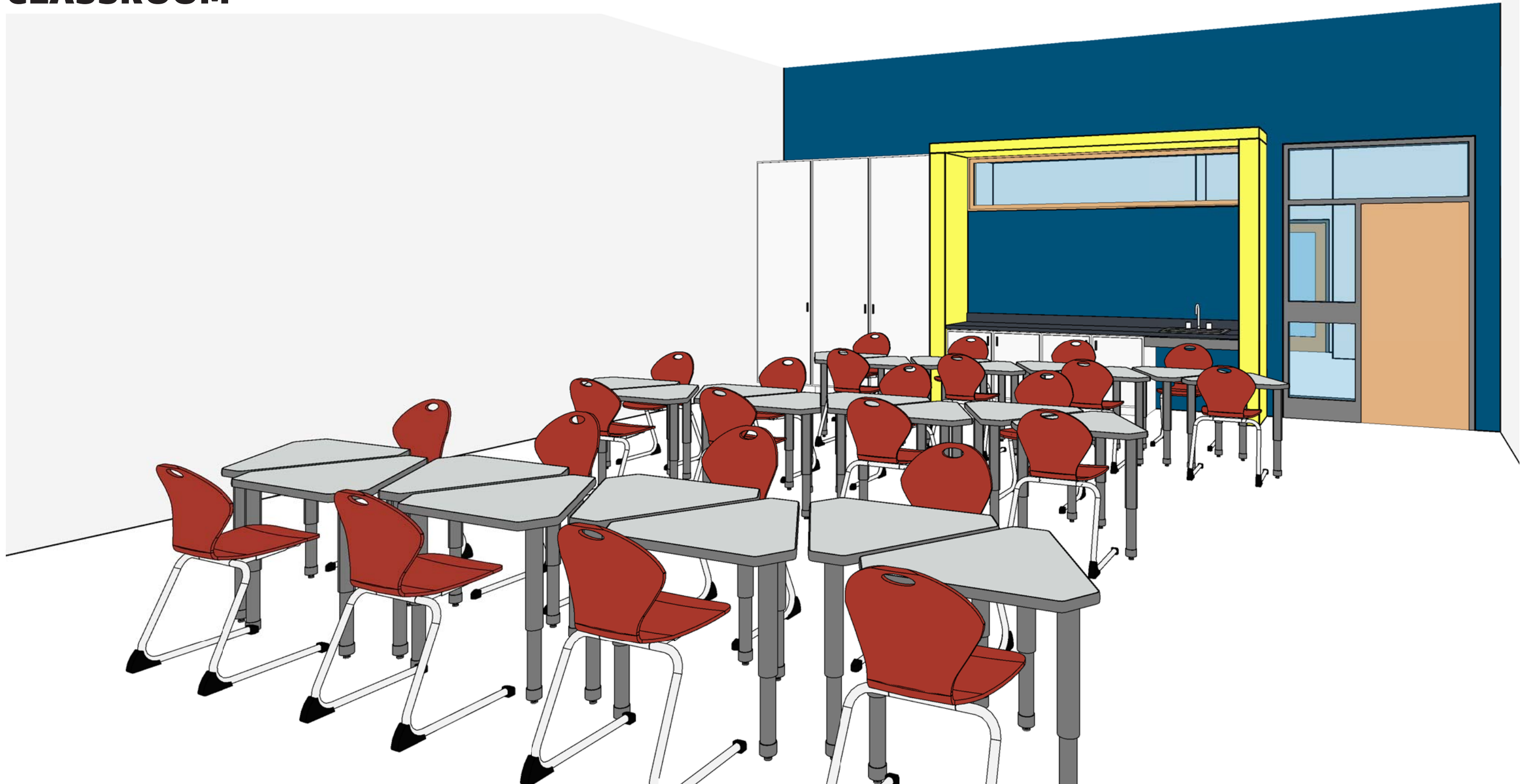
SECOND FLOOR KEY PLAN



CLASSROOM COMMUNITIES - SECOND FLOOR



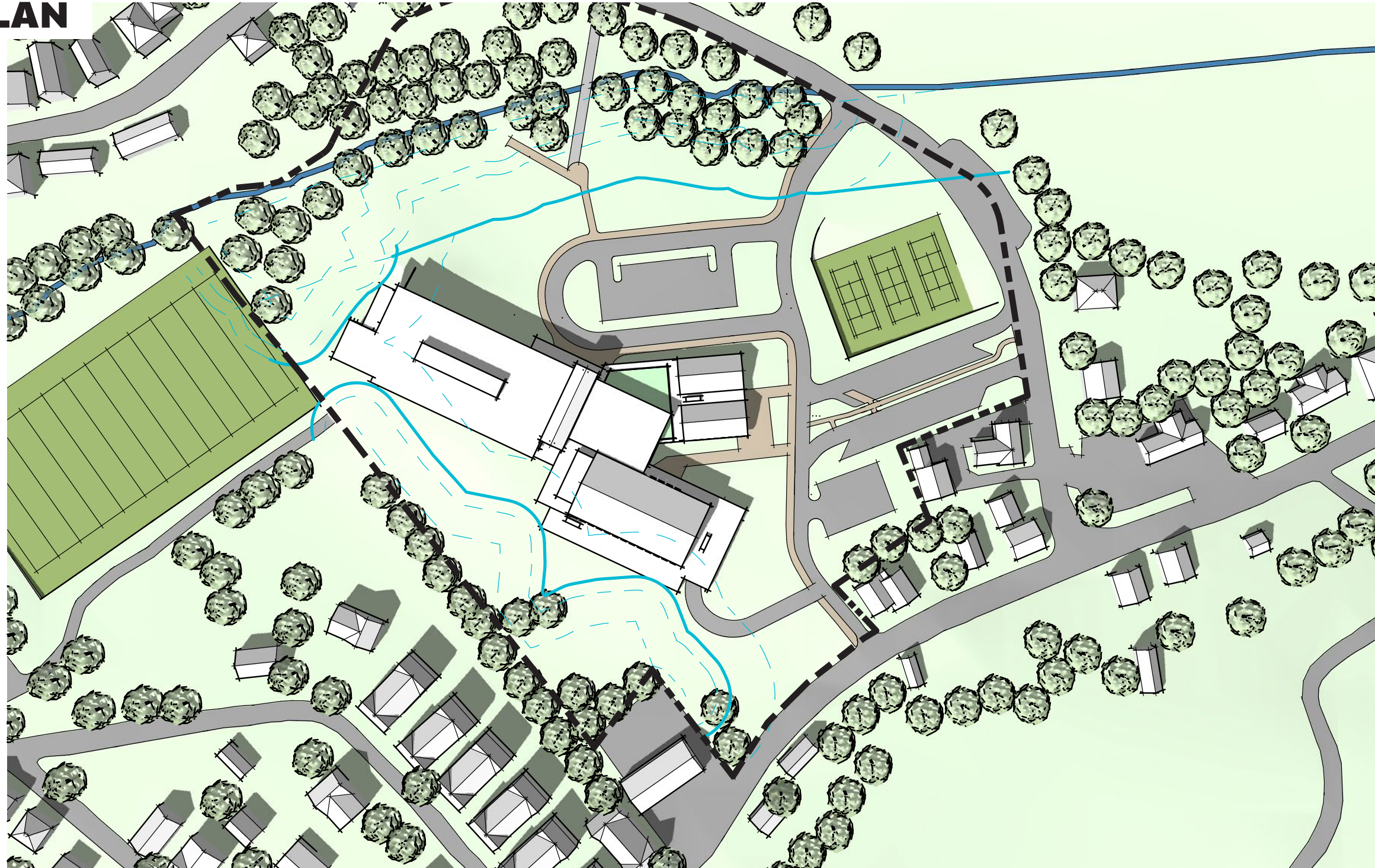
CLASSROOM



CLASSROOM COMMUNITY



SITE PLAN



BUILDING MASSING



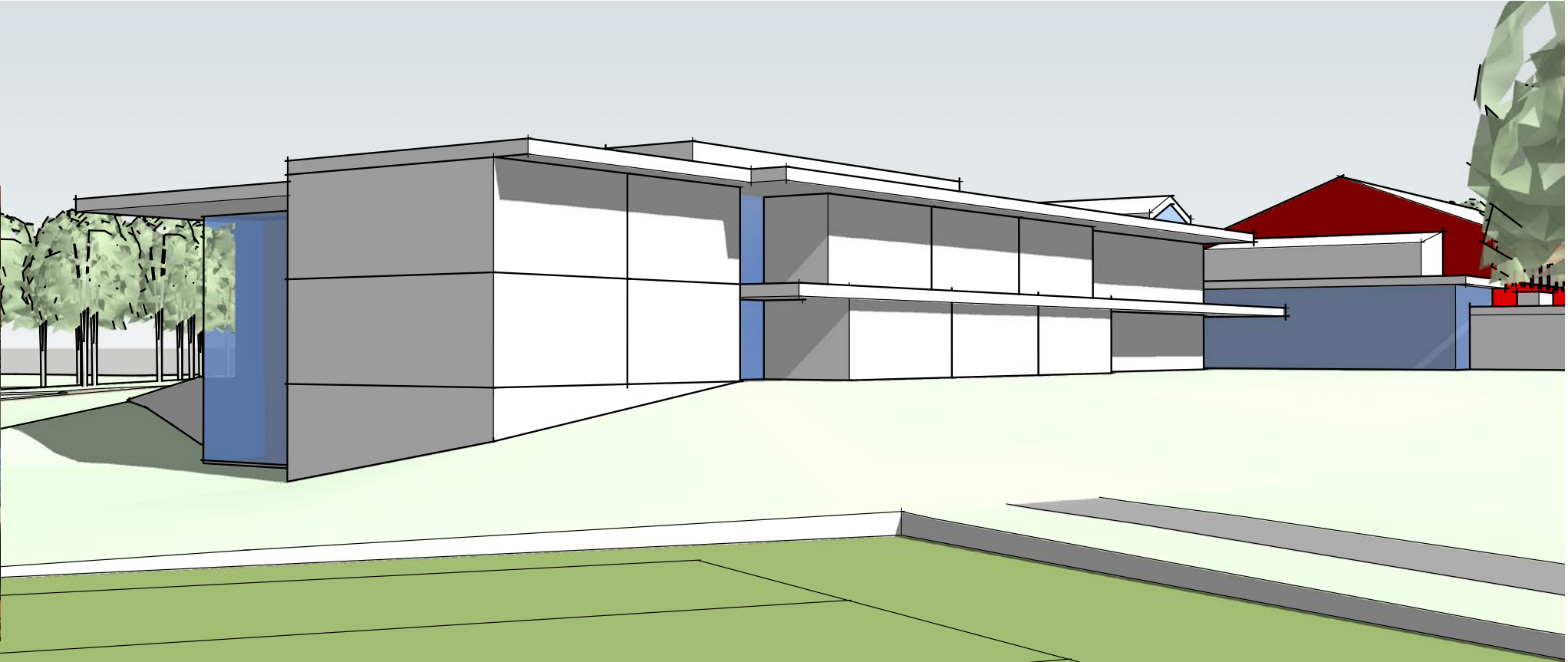
BUILDING MASSING



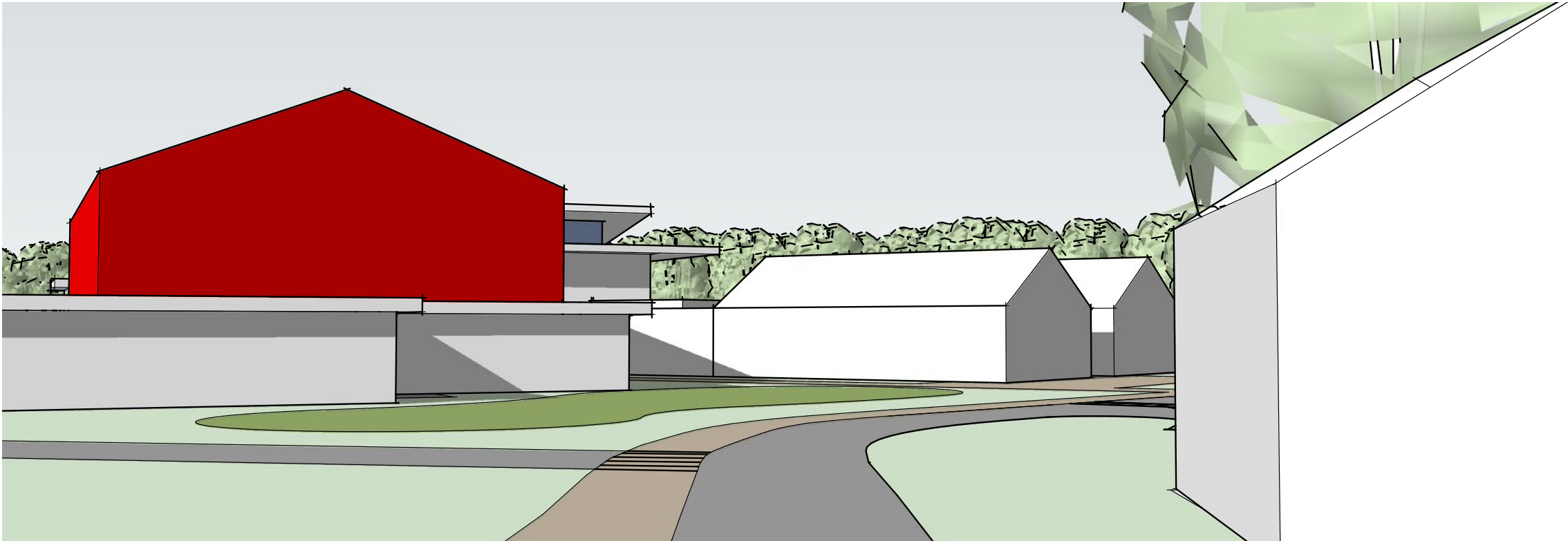
BUILDING MASSING



BUILDING MASSING



BUILDING MASSING



NEXT STEPS

- | | |
|-------------|--|
| 5/8 | SBC Meeting - Design Update/ Interiors/ FF&E |
| 5/22 | SBC Meeting - Design Update/ Approval For Estimating |
| 5/23 | Community Meeting #4 |
| <hr/> | |
| 6/12 | SBC Meeting - Review Cost Estimates |
| 6/26 | SBC Meeting - Initial Approval of SD Package |
| 7/9 | SBC Meeting - Approval to Submit SD to MSBA |





THANK YOU

