

# Manchester Memorial Elementary School

## Feasibility Phase – SBC Meeting #20

February 13, 2018



1. Call to Order
2. Previous Topics & Approval of February 1, 2018 Meeting Minutes
3. Invoices & Commitments for Review/Approval
4. Preferred Option Review & Discussion
5. PSR MSBA Submission Review & Approval (vote anticipated)
6. Other Topics Not Reasonably Anticipated 48 hours prior to Meeting
7. Public Comments
8. Adjourn

# 1. Call to Order



## 2. Previous Topics & Approval of February 1, 2018 Minutes





# PREVIOUS TOPICS

## 7.11 Site: swing space availability

### 3. Invoices & Commitments for Review/Approval

**DWMP Invoice #11 in the amount of \$14,939.00**

(invoice attached). Vote anticipated.

**JCJ Invoice #6 in the amount of \$24,285.00**

(invoice attached). Vote anticipated.

**Minuteman Press Invoice #87487 in the amount of \$349.20**

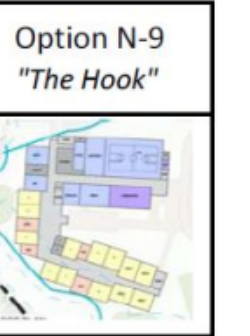
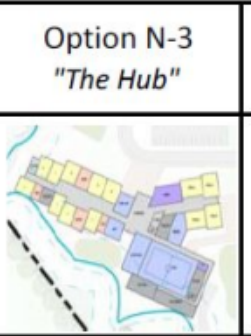
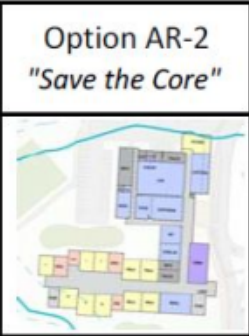
(invoice attached). Vote anticipated.

## 4. Preferred Option Review & Discussion



# RECOMMENDATIONS

- FAVORABLE
- NEUTRAL
- UNFAVORABLE



Educational				
Meets District's Space Program Goals				
Provides Flexibility for Future Building Expansion				
Flexibility for Grade Level Re-Configuration (Bubble Grades)				
Minimizes Impact to Students During Construction				
Provides Separated Whole School Gathering Space				
Community				
Provides Independent Access to Community Used Space				
Allows for Competition Size Gym with Bleachers				
Site				
Increases Amount of Play Areas/ Fields				
Welcoming Street Presence				
Improves Parent Drop-Off/ Pick-Up Queuing				
Improves Impact to Riverfront Resource Areas				
Minimizes Potential Pedestrian/ Vehicular Conflicts				
Building				
Optimizes Building Area to Perimeter Ratio				
Costs and Schedule				
Total Project Budget (Estimated)				
District Share (Estimated)				

# EVALUATING THE OPTIONS

RECOMMENDED FOR FURTHER DEVELOPMENT

**R-1** FOUR WALLS



RENOVATION ONLY

**AR-2** SAVE THE CORE



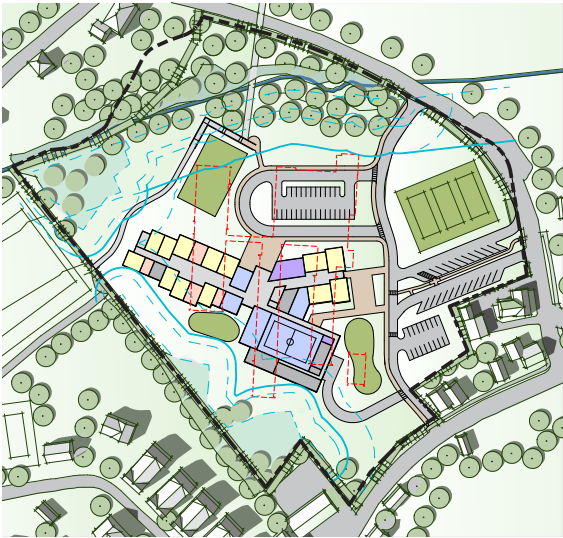
ADDITION/RENOVATION  
RETAIN CORE BLOCK ONLY

**N-1** THE PIANO



NEW CONSTRUCTION  
PHASED - STUDENTS ON-SITE

**N-3** THE HUB



NEW CONSTRUCTION  
PHASED - STUDENTS ON-SITE

**N-9** THE HOOK



NEW CONSTRUCTION  
PHASED - STUDENTS ON-SITE



# R-1 FOUR WALLS

PHASE ONE





# R-1 FOUR WALLS

## PHASE TWO





# R-1 FOUR WALLS

## PHASE THREE





# R-1 FOUR WALLS

## PHASE FOUR





R-1 FOUR WALLS

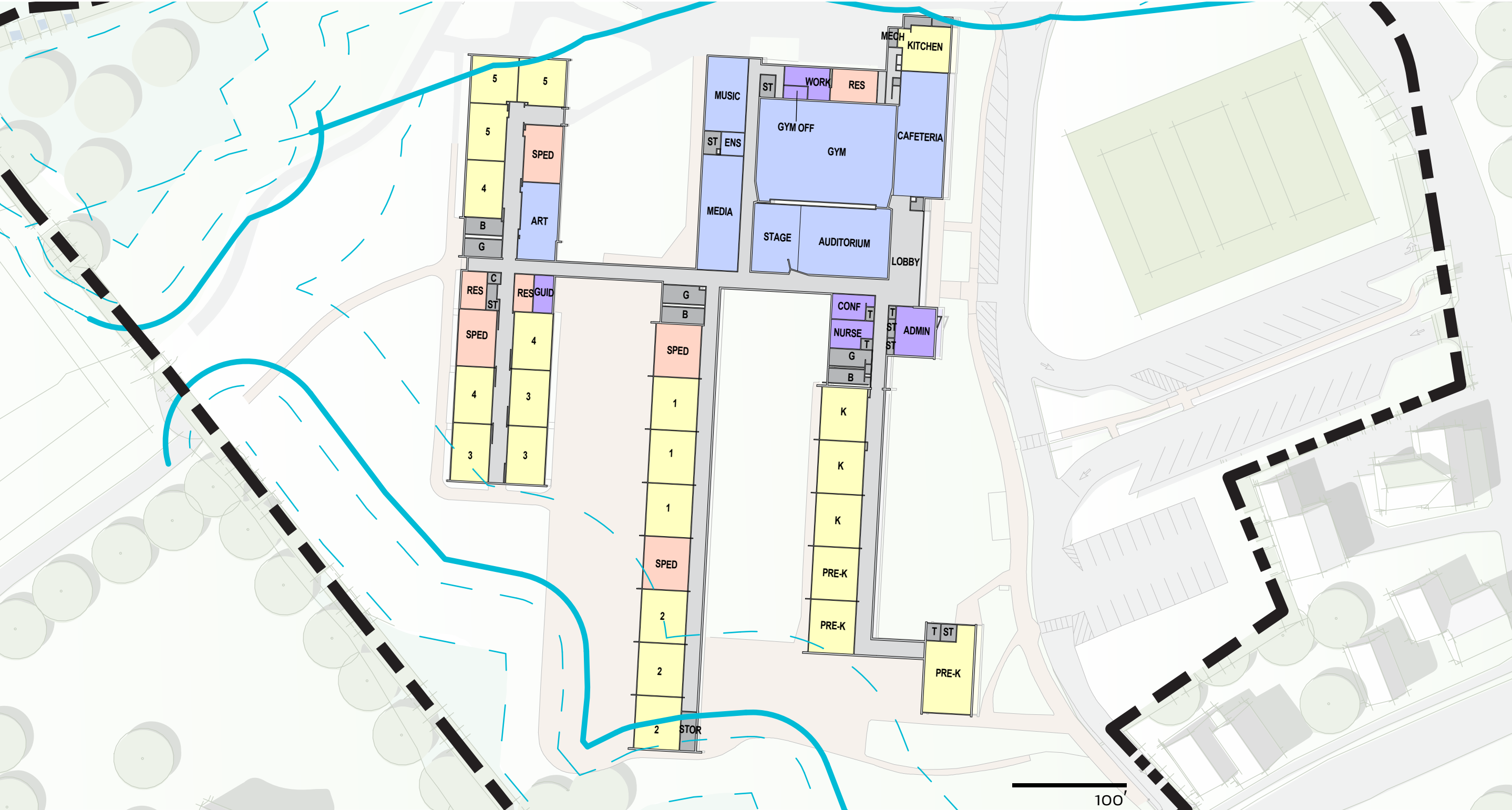


SITE PLAN

MANCHESTER MEMORIAL ELEMENTARY SCHOOL

MANCHESTER-ESSEX REGIONAL SCHOOL DISTRICT, MASSACHUSETTS

R-1 FOUR WALLS





# AR-2 SAVE THE CORE

## PHASE ONE





# AR-2 SAVE THE CORE

## PHASE TWO





# AR-2 SAVE THE CORE

## PHASE THREE





# AR-2 SAVE THE CORE

## PHASE FOUR





# AR-2 SAVE THE CORE

## PHASE FIVE





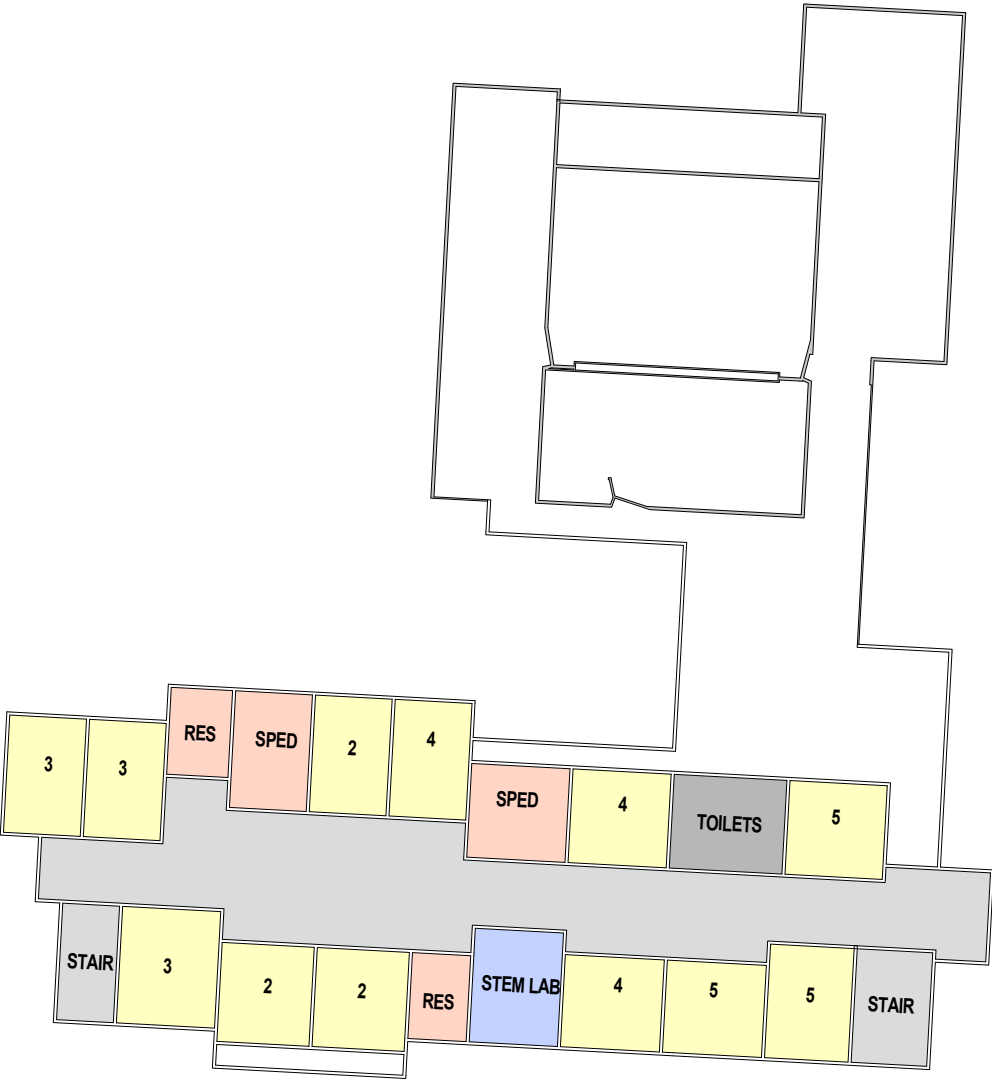
AR-2 SAVE THE CORE



AR-2 SAVE THE CORE



FIRST FLOOR PLAN



SECOND FLOOR PLAN



# N-1 THE PIANO

PHASE ONE





# N-1 THE PIANO

PHASE TWO





# N-1 THE PIANO

PHASE THREE





N-1 THE PIANO

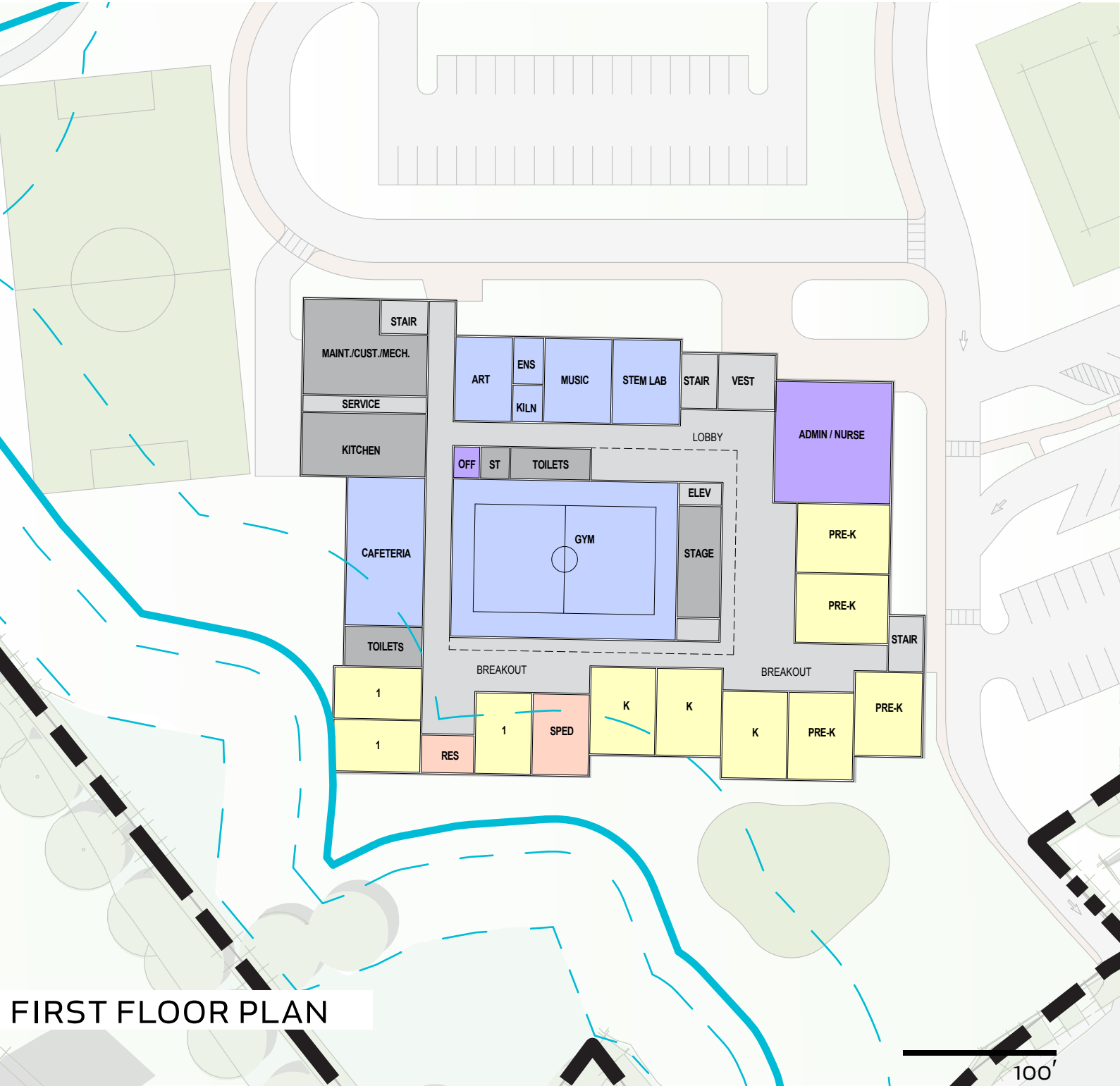


SITE PLAN

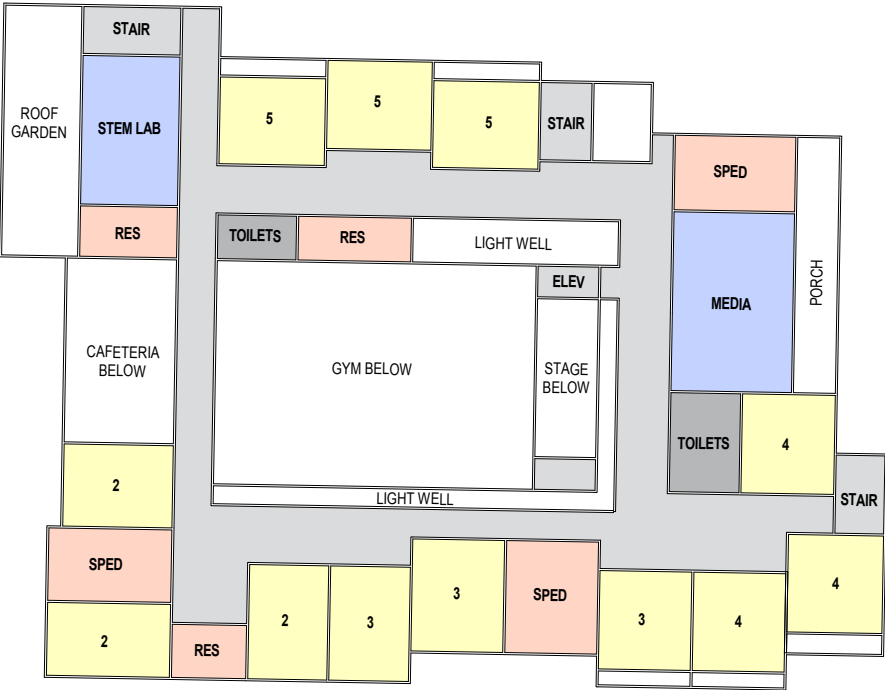
MANCHESTER MEMORIAL ELEMENTARY SCHOOL

MANCHESTER-ESSEX REGIONAL SCHOOL DISTRICT, MASSACHUSETTS

N-1 THE PIANO



FIRST FLOOR PLAN



SECOND FLOOR PLAN



# N-3 THE HUB

PHASE ONE





# N-3 THE HUB

PHASE TWO





# N-3 THE HUB

## PHASE THREE





# N-3 THE HUB

## PHASE FOUR





# N-3 THE HUB

PHASE FIVE

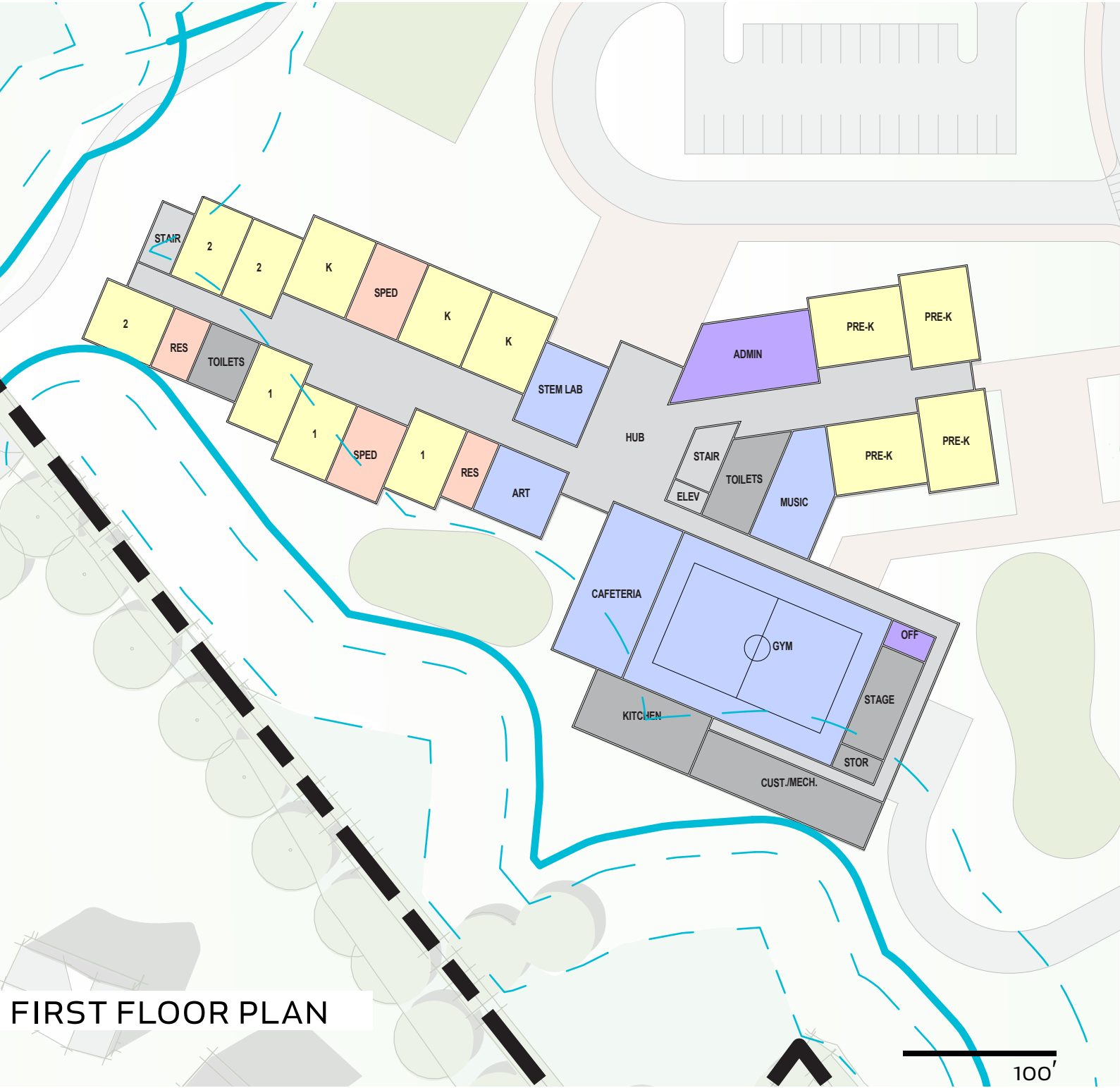




N-3 THE HUB



N-3 THE HUB



FIRST FLOOR PLAN

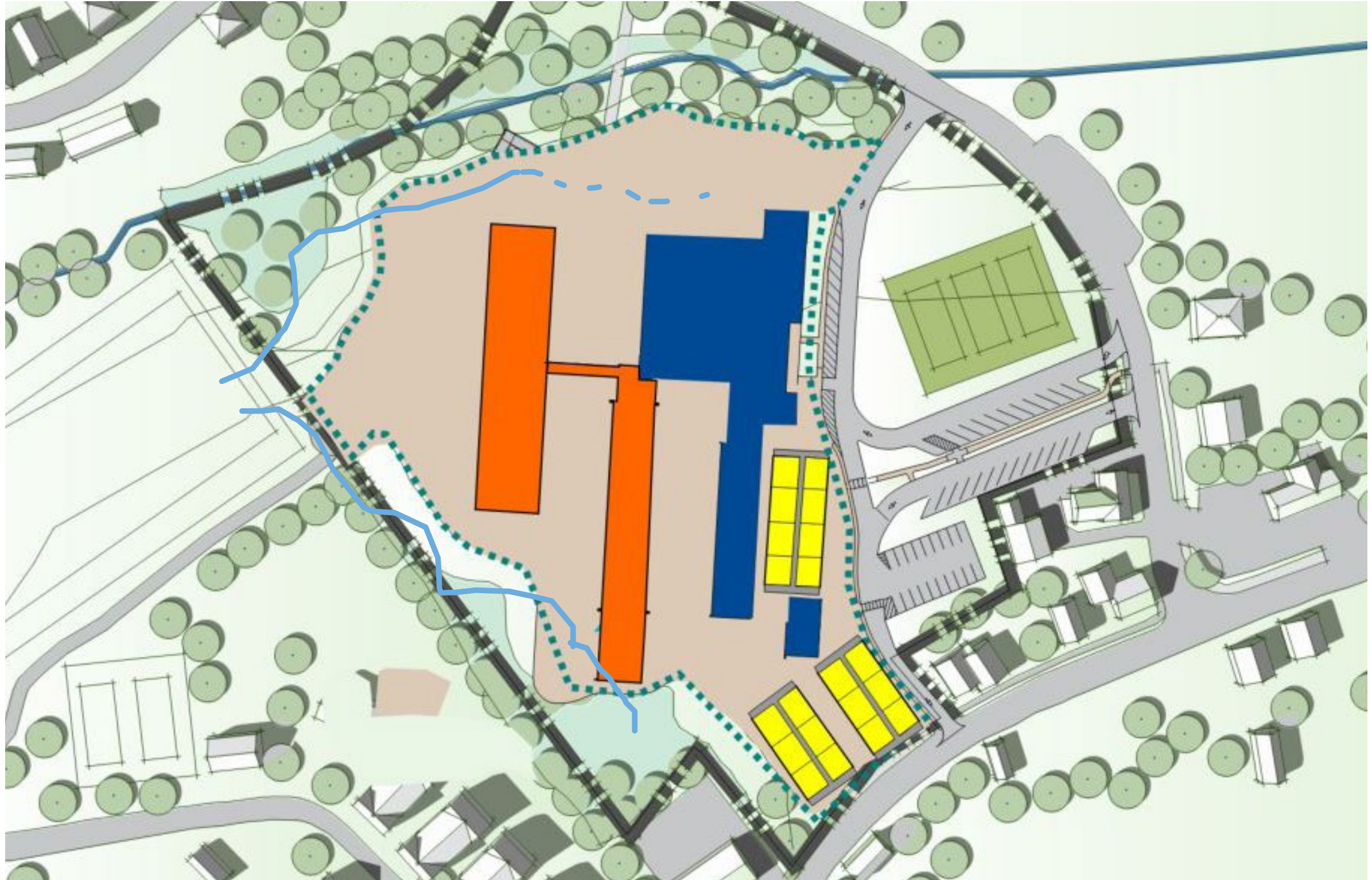


SECOND FLOOR PLAN



# N-9 THE HOOK

PHASE ONE





# N-9 THE HOOK

PHASE TWO





# N-9 THE HOOK

## PHASE THREE





# N-9 THE HOOK

## PHASE FOUR





N-9 THE HOOK



SITE PLAN

MANCHESTER MEMORIAL ELEMENTARY SCHOOL

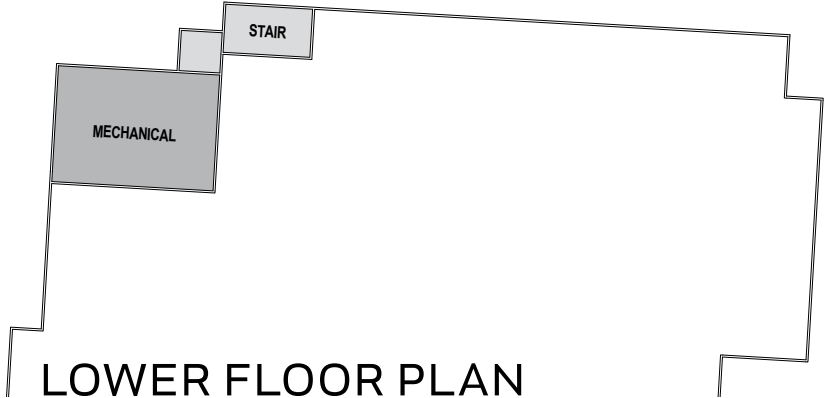
MANCHESTER-ESSEX REGIONAL SCHOOL DISTRICT, MASSACHUSETTS



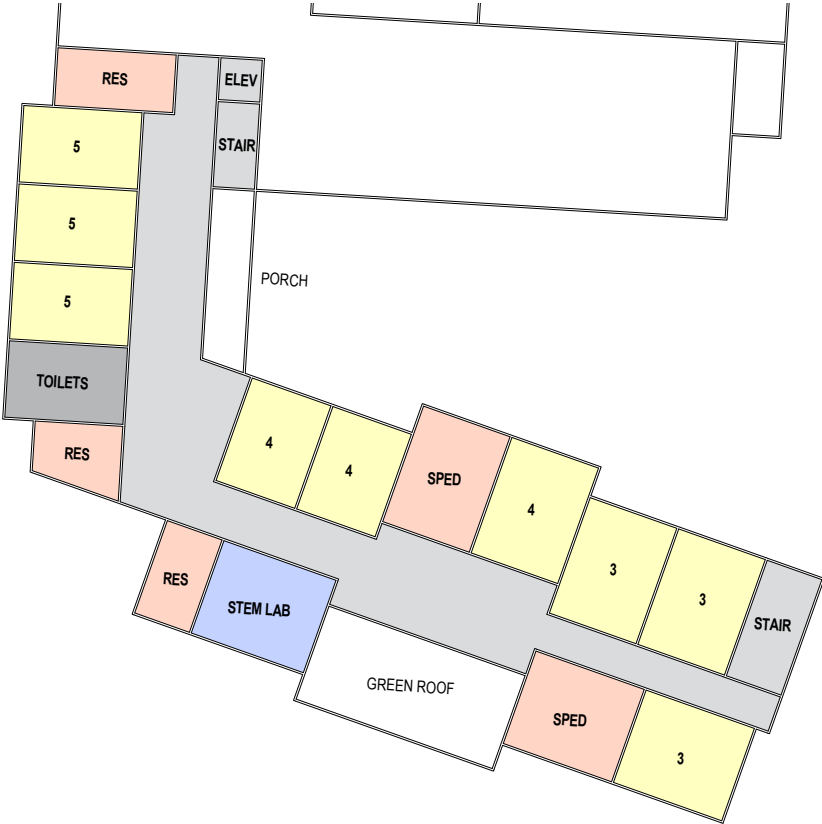
N-9 THE HOOK



FIRST FLOOR PLAN



LOWER FLOOR PLAN



SECOND FLOOR PLAN



## 5. PSR MSBA Submission Review & Approval (vote anticipated)





## 6. Other Topics Not Reasonably Anticipated (48 hours prior to meeting)

# 7. Public Comments





# 8. Adjourn



# THANK YOU

